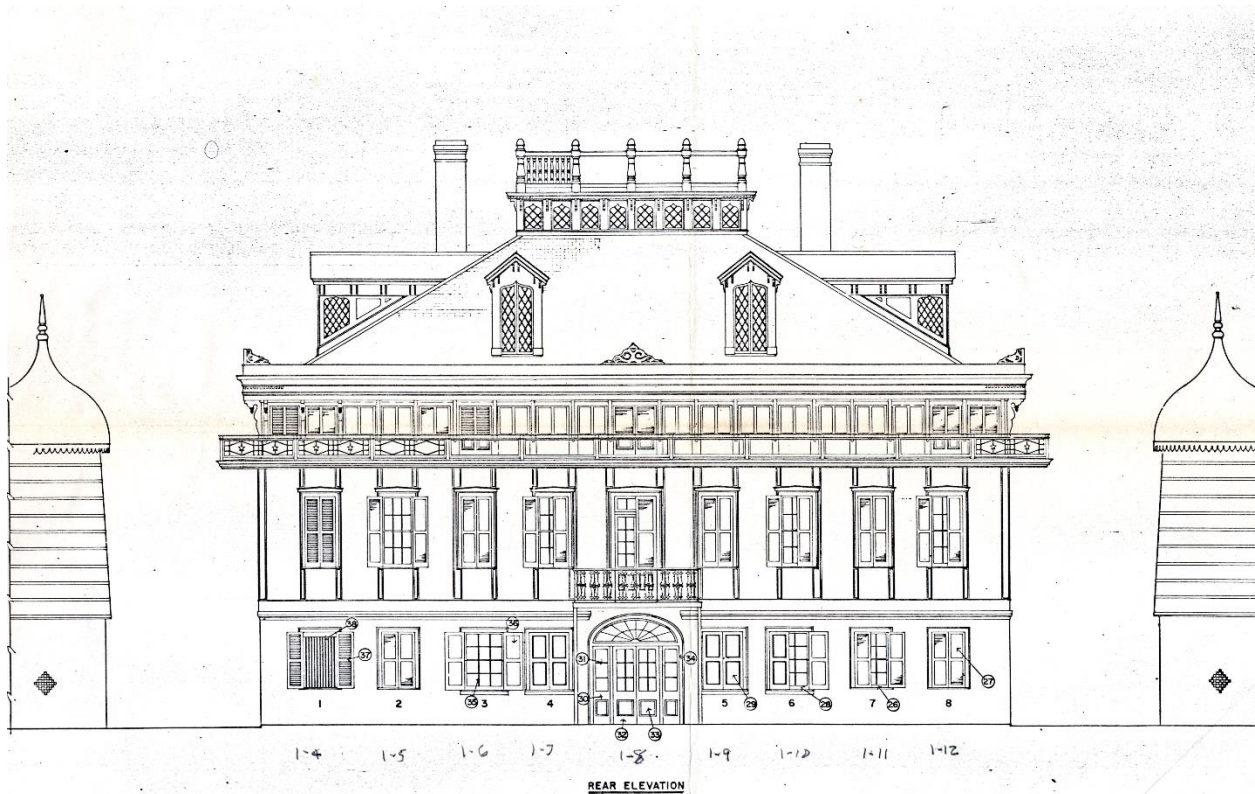


San Francisco Plantation House Measured Drawings

SOUTHEASTERN ARCHITECTURAL ARCHIVE
COLLECTION 87



San Francisco Plantation House, rear elevation. Koch and Wilson, Architects. Ink on mylar.

SCOPE and CONTENTS

Measured drawings
1974 – 1976
One folder

Measured drawings prepared for the restoration of San Francisco plantation house, St. James Parish, Louisiana in 1974-1976 by Koch and Wilson, Architects, New Orleans.

PROVENANCE

Records were given by Koch and Wilson, Architects to Tulane in 1981 and 1988.

ACCESS

This collection is housed in Tulane University Libraries' Southeastern Architectural Archive (SEAA) and requires an advance appointment for use. For further information, call (504) 865-5699, or email seaa@tulane.edu. The unauthorized use, including, but not limited to, publication of the materials without the prior written permission of the Southeastern Architectural Archive is strictly prohibited. All inquiries regarding permission to publish should be submitted in writing. Please see our [Permission to Publish Guidelines](#).

PREFERRED CITATION

San Francisco Plantation House Measured Drawings, Southeastern Architectural Archive, Special Collections Division, Tulane University Libraries.