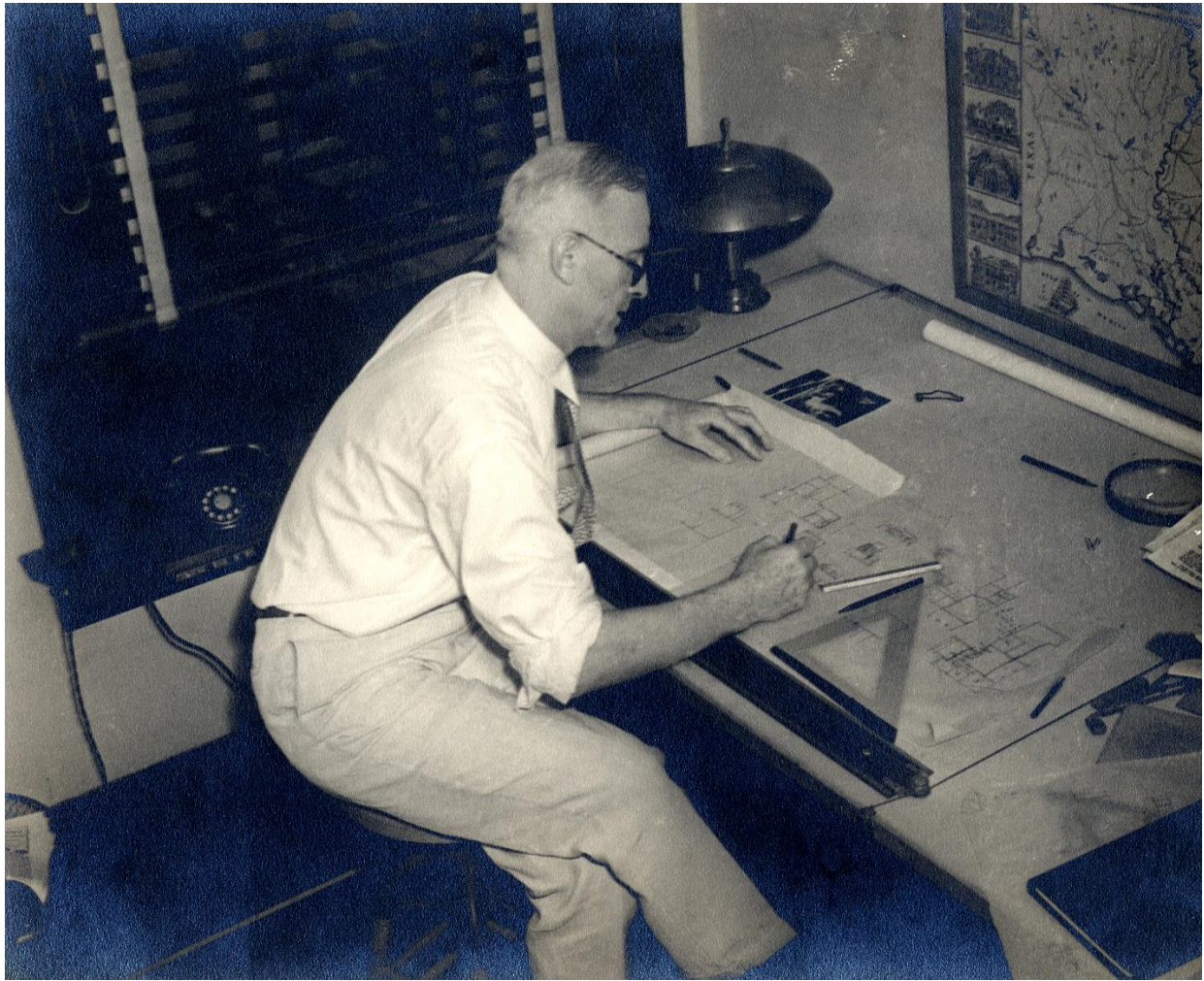


# Richard Koch Papers and Photographs

## SOUTHEASTERN ARCHITECTURAL ARCHIVE COLLECTION 80



Richard Koch at the Koch and Wilson office in the Queen and Crescent Building, New Orleans. Ca. 1950s.

### **SCOPE and CONTENTS**

Photographic negatives and contact prints; photographic prints, drawings,  
correspondence, and research notes

Ca. 1882 – 1960

8 negative drawers; 3 albums; 24 boxes; one folder

Photographic negatives and contact prints of architectural subjects, made by New Orleans architect Richard Koch (1889-1971). The majority of negatives show historic architecture of Louisiana, but

there are also views of buildings in the American Northeast, Europe, and elsewhere. Negatives are mostly 4" x 5". Louisiana negatives were mostly made during the 1930s and 1940s in connection with Koch's work as head of the Louisiana Division of the Historic American Buildings Survey. Also included are 22 drawings made by Koch while a student at the Atelier Bernier in Paris, 1911-1912, plus sketches made while he was traveling in Spain in 1924. Papers consist of personal correspondence and correspondence and research notes concerning his work with the Historic American Buildings Survey. There are also drawings by Koch's father, architect-builder Julius Koch (1857-1919), and original floor plans for the Koch family home at 2627 Coliseum Street, New Orleans (architect unknown).

Koch also collected historic glass plate negatives, including those of John Norris Teunisson (1869-1959) and Georges Francois Mugnier (1857-1938). During the summer of 2016, the Southeastern Architectural Archive digitized the original plates and conserved them in archival housing.

Richard Koch was born in New Orleans, Louisiana. He earned his architectural degree from Tulane University in 1910, and also studied in Paris. He worked for architectural firms on the east coast of the U.S., including Eymar Embury and John Russell Pope. Returning to New Orleans ca. 1916, he established a firm with Charles Armstrong. In the 1930s, Koch became Louisiana director of the Historic American Buildings Survey. In 1935 Koch hired fellow Tulane graduate, Samuel Wilson, Jr. (1911-1993) to work for his firm. In 1955, Wilson became a partner with Koch, changing the name of the firm to Richard Koch and Samuel Wilson, Jr., which was later changed to Koch and Wilson, which is still in operation today.

## PROVENANCE

Photographic negatives were made by Koch over the course of his career and retained by him at his architectural office. Most negatives showing Louisiana subjects were made during the 1930s when Koch headed the Louisiana Division of the Historic American Buildings Survey. Others were made on his various travels. Negatives were bequeathed by Koch in 1972 to Tulane. They were transferred to SEAA in 1980. The Atelier Bernier drawings were given at some point by Koch to the Tulane School of Architecture, and later transferred to SEAA in 1980. Spanish sketches were made by Koch in 1924 and retained by him at his office, passing after his death to his partner Samuel Wilson, Jr., who donated them to Tulane in 1972. Correspondence and other records were retained by Samuel Wilson, Jr. and bequeathed by him in 1993.

## ACCESS

This collection is housed in Tulane University Libraries' Southeastern Architectural Archive (SEAA) and requires an advance appointment for use. For further information, call (504) 865-5699, or email [seaa@tulane.edu](mailto:seaa@tulane.edu). The unauthorized use, including, but not limited to, publication of the materials without the prior written permission of the Southeastern Architectural Archive is strictly prohibited. All inquiries regarding permission to publish should be submitted in

writing. Please see our [Permission to Publish Guidelines](#).

## PREFERRED CITATION

Richard Koch Papers and Photographs, Southeastern Architectural Archive, Special Collections Division, Tulane University Libraries.

## INVENTORY

**Photographic Prints-New Orleans, by Street Address.** (*Volume 1-2 of Contact Prints in Binders*). (4"x5" contact prints made directly from negatives. Some images may have been printed in reverse).

### Volume 1.

Annunciation Street, 1321, New Orleans. 7 prints.

Barracks Street, 601-603, New Orleans. One print.

Barracks Street, 641, New Orleans. One print.

Barracks Street, 1003, New Orleans. One print.

Bayou Road, 2257, New Orleans. 4 prints.

Bienville Street, 826-828, New Orleans. 2 prints.

Bienville Street, 830-832; 834-836, New Orleans. One print

Bienville Street, 912-916, New Orleans. One print.

Bienville Street, 918-920, New Orleans. One print.

Bienville Street, 924, New Orleans. One print.

Bourbon Street, 227-229, New Orleans. 2 prints.

Bourbon Street, 238, New Orleans. 6 prints.

Bourbon Street, 508, New Orleans. One print.

Bourbon Street, 516, New Orleans. 2 prints.

Bourbon Street, 612-614, New Orleans. One print.

Bourbon Street, 618-620, New Orleans. One print.

Bourbon Street, 629, New Orleans. One print.

Bourbon Street, 633, New Orleans. 2 prints.

Bourbon Street, 701, New Orleans. 2 prints.

Bourbon Street, 721-725, New Orleans. One print.

Bourbon Street, 739-741, New Orleans. One print.

Bourbon Street, 818, New Orleans. 2 prints.

Bourbon Street, 941, New Orleans. 3 prints.

Bourbon Street, 1303, New Orleans. One print.

Bourbon Street, 1307, New Orleans. 3 prints.

Burgundy Street, 701-703, New Orleans. One print.

Burgundy Street, 819, New Orleans. 5 prints.

Burgundy Street, 911-913, New Orleans. One print.

Burgundy Street, 1112-1114, New Orleans. One print.

Burgundy Street, 1118-1120; 1122, New Orleans. One print.

Burgundy Street, 1131, New Orleans. One print.

Burgundy Street, 1213-1215, New Orleans. One print

Burgundy Street, 1218-1220, New Orleans. One print.

Burgundy Street, 2039, New Orleans. 2 prints.

Calliope Street, 1118-1120, New Orleans. One print.

Camp Street, 818, New Orleans. One print.

Camp Street, 822, New Orleans. One print.

Camp Street, 901-913, New Orleans. 6 prints.

Camp Street, 944, New Orleans. 3 prints.

Camp Street, 1021, New Orleans. 4 prints.

Camp Street, 1067, New Orleans. 2 prints.

Camp Street, 1069-1077, New Orleans. 3 prints.

Canal Street, 423, New Orleans. 6 prints.

Christ Church, Canal Street, New Orleans. 4 prints.

Carondelet Street, 637-643, New Orleans. 2 prints.

Carondelet Street, 1908-1910, New Orleans. One print.

Carondelet Street, 3603, New Orleans. One print.

Carondelet Street, 3611, New Orleans. One print.

Chartres Street, 313, New Orleans. 2 prints.

Chartres Street, 335-337, New Orleans. One print.

Chartres Street, 440, New Orleans. 2 prints.

Chartres Street, 500, New Orleans. 16 prints.

Chartres Street, 514, New Orleans. 3 prints.

Chartres Street, 524-542, New Orleans. One print.

Chartres Street, 526, New Orleans. One print.

Chartres Street, 530-534, New Orleans. One print.

Chartres Street, 536-542, New Orleans. One print.

Chartres Street, 601, New Orleans. One print.

Chartres Street, 617, New Orleans. 2 prints.

Chartres Street, 625, New Orleans. 3 prints.

Chartres Street, 1000 block, New Orleans. One print.

Chartres Street, 1013-1015, New Orleans. One print.

Chartres Street, 1027-1029, New Orleans. One print.

Chartres Street, 1133-1135, New Orleans. 3 prints.

Chartres Street, 2409-2411, New Orleans. 8 prints.

Chartres Street, 2718-2720 (?), New Orleans. One print.

Chartres Street, 3933, New Orleans. 3 prints.

Chartres Street, 4111, New Orleans. 28 prints.

Coliseum Street, 1749, New Orleans. 17 prints.

Congress Street, 619, New Orleans. 4 prints.

Constance Street, 1458, New Orleans. 3 prints.

Conti Street, 526, New Orleans. One print.

Conti Street, 618-624, New Orleans. One print.

Conti Street, 741, New Orleans. 6 prints.

Dauphine Street, 418, New Orleans. 2 prints.

Dauphine Street, 513-515, New Orleans. 3 prints.

Dauphine Street, 625-627, New Orleans. 3 prints.

Dauphine Street, 633, New Orleans. 12 prints.

Dauphine Street, 715, New Orleans. 2 prints.

Dauphine Street, 716, New Orleans. 5 prints.

Dauphine Street, 831-833, New Orleans. One print.

Dauphine Street, 903-907, New Orleans. One print.

Dauphine Street, 1012, New Orleans. 3 prints.

Dauphine Street, 1809-1811, New Orleans. One print.

Dauphine Street, 1825-1827, New Orleans. One print.

Dauphine Street, 1033, New Orleans. One print.

Dauphine Street, 1221-1229, New Orleans. One print.

Dauphine Street, 4580, New Orleans. 2 prints.

Decatur Street, 601-607, New Orleans. One print.

Decatur Street, 1101-1139, New Orleans. One print.

Decatur Street, 1227-1241, New Orleans. One print.

Decatur Street, 1301-1327, New Orleans. 2 prints.

Decatur Street, 1301, New Orleans. One print.

Decatur Street, 2741, New Orleans. 19 prints.

Dryades Street, 1139, New Orleans. 4 prints.

Dumaine Street, 612, New Orleans. 11 prints.

Dumaine Street, 627-629, New Orleans. One print.

Dumaine Street, 707-709, New Orleans. 2 prints.

Dumaine Street, 731-733, New Orleans. 3 prints.

Dumaine Street, 741-743, New Orleans. 2 prints.

Dumaine Street, 831, New Orleans. 2 prints.

Dumaine Street, 1321, New Orleans. 4 prints.

Esplanade Avenue, 400, New Orleans. 7 prints.

Esplanade Avenue, 600, New Orleans. 4 prints.

Esplanade Avenue, 604, New Orleans. 2 prints.

Esplanade Avenue, 627, New Orleans. One print.

Esplanade Avenue, 740, New Orleans. 2 prints.

Esplanade Avenue, 908, New Orleans. 3 prints.

Euterpe Street, 1524, New Orleans. One print.

Exchange Alley, 301, New Orleans. One print.

Exchange Place, 301-313, New Orleans. One print.

First Street, 1239, New Orleans. 4 prints.

First Street, 1315, New Orleans. 2 prints.

Fourth Street, 1020, New Orleans. 3 prints.

Fourth Street, 1227, New Orleans. One print.

Frenchmen Street, 924-926, New Orleans. One print.

Frenchmen Street, 928-930, New Orleans. One print.

French Market Place, 95-97, New Orleans. 4 prints.

Girod Street, 719-723, New Orleans. 4 prints.

Governor Nicholls Street, 716-724, New Orleans. 7 prints.

Governor Nicholls Street, 726-728, New Orleans. One print.

Governor Nicholls Street, 831, New Orleans. One print.

Governor Nicholls Street, 913, New Orleans. 2 prints.

Governor Nicholls Street, 919, New Orleans. One print.

Governor Nicholls Street, 928-932, New Orleans. 4 prints.

Governor Nicholls Street, 1024, New Orleans. One print.

Governor Nicholls Street, 1201-1203, New Orleans. 4 prints.

Harmony Street, 1134, New Orleans. 3 prints.

Howard Avenue, 534, New Orleans. 32 prints.



Howard Avenue, 619, New Orleans. One print.

Independence Street, 619-621, New Orleans. 2 prints. (additional 2 prints in Volume 2).

**Volume 2.**

Independence Street, 619-621, New Orleans. One print. (3 of 3 total. Print 1-2 in Volume 1).

Independence Street, 739-741, New Orleans. 2 prints.

Jackson Avenue, 1129, New Orleans. 4 prints.

Jackson Avenue, 1207, New Orleans. 6 prints.

Jackson Avenue, 1237, New Orleans. 2 prints.

Jackson Avenue, 1302-1306, New Orleans. 2 prints.

Jackson Avenue, 1314, New Orleans. 4 prints.

Jackson Avenue, 1329, New Orleans. 2 prints.

Jackson Avenue, 1410, New Orleans. One print.

Jackson Barracks, St. Bernard Parish, LA. 4 prints.

Jackson Square, New Orleans. 2 prints.

Josephine Street, 739-741, New Orleans. One print.

Josephine Street, 807-815, New Orleans. 3 prints.

Josephine Street, 825, New Orleans. 2 prints.

Josephine Street, 1421, New Orleans. One print.

Julia Street, 600-610, New Orleans. One print

Julia Street, 610, New Orleans. One print.

Lafayette Street, 205, Gretna, LA. 2 prints.

Lafayette Cemetery, New Orleans. One print.

Magazine Street, 305, New Orleans. One print.

Magazine Street, 331, New Orleans. 5 prints.

Magazine Street, 1441, New Orleans. One print.

Magazine Street, 1529, New Orleans. One print.

Magazine Street, 2715, New Orleans. One print.

Magazine Street, 2855, New Orleans. 3 prints.

Mandeville Street, 613-615, New Orleans. One print.

Mandeville Street, 700-702, New Orleans. 3 prints.

Market Street, 401-451, New Orleans. 2 prints.

Moss Street, 1400, New Orleans. One print.

Napoleon Avenue, 1025, New Orleans. 3 prints.

North Liberty Street, 828, New Orleans. One print.

North Rampart Street, 228, New Orleans. One print.

North Rampart Street, 232, New Orleans. 3 prints.

Orange Street, 611-615, New Orleans. 3 prints.

Orleans Street, 706-710, New Orleans. 2 prints.

Orleans Street, 834, New Orleans. One print.

Orleans Street, 910, New Orleans. One print.

Orleans Street, 912, New Orleans. One print.

Pauger Street, 1436, New Orleans. One print.

Pauger Street, 1508, New Orleans. One print.

Poydras Street, 429, New Orleans. One print.

Prytania Street, 1823, New Orleans. One print.

Prytania Street, 2127, New Orleans. 7 prints.

Prytania Street, 2423, New Orleans. One print.

Prytania Street, 2507, New Orleans. 2 prints.

Prytania Street, 2520, New Orleans. 2 prints.

Prytania Street, 2605, New Orleans. 3 prints.

Race Street, 909-911, New Orleans. One print.

Race Street, 917, New Orleans. One print.

Richard Street, 700-748, New Orleans. 2 prints.

Royal Street, 300 block, New Orleans. One print.

Royal Street, 339, New Orleans. One print.

Royal Street, 344, New Orleans. One print.

Royal Street, 539-541, New Orleans. 2 prints.

Royal Street, 601-607, New Orleans. One print.

Royal Street, 612, New Orleans. 3 prints.

Royal Street, 613, New Orleans. One print.

Royal Street, 624, New Orleans. 2 prints.

Royal Street, 631, New Orleans. One print.

Royal Street, 712, New Orleans. 2 prints.

Royal Street, 822-824, New Orleans. One print.

Royal Street, 900, New Orleans. 2 prints.

Royal Street, 1141, New Orleans. One print.

Royal Street, 2701, New Orleans. One print.

St. Andrew Street, 1426, New Orleans. One print.

St. Ann Street, 625, New Orleans. One print.

St. Ann Street, 637-639, New Orleans. One print.

St. Ann Street, 813-815, New Orleans. One print.

St. Ann Street, 817-819, New Orleans. 10 prints.

St Ann Street, 822-924, New Orleans. 8 prints.

St. Ann Street, 826, New Orleans. 2 prints.

St. Ann Street, 917, New Orleans. 32 prints.

St. Ann Street, 928, New Orleans. 3 prints.

St. Charles Street, 545, New Orleans. 2 prints.

St. Charles Avenue, 1109, New Orleans. One print.

St. Charles Avenue, 1311-1315, New Orleans. 2 prints.

St. Charles Avenue, 2265, New Orleans. One print.

St. Charles Avenue, 2524, New Orleans. 7 prints.

St. Charles Avenue, 2702, New Orleans. 2 prints.

St. Charles Avenue, 2855, New Orleans. 36 prints.

St. Charles Avenue, 3005, New Orleans. 3 prints.

St. Charles Avenue, 3900, New Orleans. 2 prints.

St. Charles Avenue, 4007, New Orleans. 7 prints.

St. Charles Avenue, 5318, New Orleans. 6 prints.

St. Louis Cemetery No. 1, New Orleans. 15 prints.

St. Louis Street, 531, New Orleans. One print.

St. Louis Street, 533, New Orleans. 6 prints.

St. Louis Street, 716, New Orleans. One print.

St. Louis Street, 908, New Orleans. 3 prints.

St. Louis Street, 1016, New Orleans. 3 prints.

St. Louis Street, 1026-1030, New Orleans. One print.

St. Louis Street, 1032, New Orleans. 3 prints.

St. Mary Street, 709-719, New Orleans. One print.

St. Mary Street, 709, New Orleans. One print.

St. Mary Street, 717, New Orleans. One print.

St. Mary Street, 719, New Orleans. One print.

St. Peter Street, 600-700 block, New Orleans. One print.

St. Peter Street, 627-639, New Orleans. One print.

St. Peter Street, 714, New Orleans. One print.

St. Peter Street, 723-725, New Orleans. 2 prints.

St. Peter Street, 726, New Orleans. 3 prints.

St. Peter Street, 729, New Orleans. One print.

St. Peter Street, 836, New Orleans. One print.

St. Peter Street, 1029-1033, New Orleans. One print.

St. Philip Street, 726-728, New Orleans. One print.

St. Philip Street, 730-732, New Orleans. 3 prints.

St. Philip Street, 823-825, New Orleans. 2 prints.

St. Philip Street, 827-829, New Orleans. 5 prints.

St. Philip Street, 831-833, New Orleans. One print.

St. Philip Street, 910, New Orleans. One print.

St. Philip Street, 919, New Orleans. 10 prints.

St. Philip Street, 931-933, New Orleans. 7 prints.

St. Philip Street, 1007-1009, New Orleans. 8 prints.

St. Philip Street, 1012, New Orleans. One print.

St. Philip Street, 1023-1025, New Orleans. One print.

St. Thomas Street, 1601-1641, New Orleans. 2 prints.

Second Street, 1410, New Orleans. 3 prints.

Second Street, 1632-1634, New Orleans. One print

Second Street, 1636-1638, New Orleans. One print

Simon Bolivar Boulevard, 1417-1419, New Orleans. One print.

South Street, 614, New Orleans. One print.

South Liberty Street, 205, New Orleans. One print.

Spanish Fort, New Orleans. One print.

South Rampart Street, 153, New Orleans. 8 prints.

Tchoupitoulas Street, 923, New Orleans. One print.

Tchoupitoulas Street, 1601-1643, New Orleans. One print.

Third Street, 1415, New Orleans. 3 prints.

Third Street, 1524, New Orleans. 2 prints.

Third Street, 1530, New Orleans. 2 prints.

Third Street, 514-518, New Orleans. 3 prints.

Toulouse Street, 628, New Orleans. 4 prints.

Toulouse Street, 633, New Orleans. One print.

Toulouse Street, 705, New Orleans. One print.

Toulouse Street, 719, New Orleans. One print.

Toulouse Street, 723, New Orleans. 21 prints.  
Toulouse Street, 725-729, New Orleans. 2 prints.  
Toulouse Street, 826, New Orleans. 4 prints.  
Toulouse Street, 828, New Orleans. 2 prints.  
Toulouse Street, 907, New Orleans. One print.  
Tulane Avenue, 1532, New Orleans. 7 prints.  
Ursuline Street, unidentified address, New Orleans. One print.  
Washington Avenue, 536, New Orleans. 3 prints.  
Washington Avenue, 935, New Orleans. One print.  
Washington Avenue, 1136-1138, New Orleans. One print.  
Washington Avenue, 1226, New Orleans. 2 prints.  
Washington Avenue, 1239, New Orleans. One print.

**Photographic Prints-Louisiana Plantations.** (*Volume 3 of Contact Prints in Binders*).  
(4" x 5" contact prints made directly from negatives. Some images may have been printed in reverse).

Sheet 1, Side A.	Afton Villa, West Feliciana Parish. (3 total). 3 exterior views. Angelina, St. John the Baptist Parish. (2 total). 1 exterior view.
Sheet 1, Side B.	Angelina, St. John the Baptist Parish. 1 exterior view. Arlington, East Carroll Parish. (1 total). 1 exterior view.
Sheet 1, Side B.	Ashland-Belle Helene, Ascension Parish. (8 total). 2 exterior views.
Sheet 2, Side A.	Ashland-Belle Helene, Ascension Parish. 4 exterior views.
Sheet 2, Side B.	Ashland-Belle Helene, Ascension Parish. 2 exterior views. Asphodel, East Feliciana Parish. (10 total). 2 exterior views.
Sheet 3, Side A.	Asphodel, East Feliciana Parish. 2 exterior views; 2 interior.
Sheet 3, Side B.	Asphodel, East Feliciana Parish. 4 interior views.

Sheet 4, Side A. Austerlitz, Pointe Coupee Parish. (2 total). 2 exterior views.  
 Bagatelle, St. James Parish. (2 total). 2 exterior views.

Sheet 4, Side B. Barbarra, St. Charles Parish. (4 total). 3 exterior views.  
 Becnel House, St. Gabriel Parish. (4 total). 1 exterior view.

Sheet 5, Side A. Becnel House, St. Gabriel Parish. 2 exterior views; 1 interior.  
 Belle Aire, Plaquemines Parish. (1 total). 1 exterior view.

Sheet 5, Side B. Belle Grove, Iberville Parish. (29 total). 4 exterior views.

Sheet 6, Side A. Belle Grove, Iberville Parish. 4 exterior views.

Sheet 6, Side B. Belle Grove, Iberville Parish. 4 exterior views.

Sheet 7, Side A. Belle Grove, Iberville Parish. 4 exterior views.

Sheet 7, Side B. Belle Grove, Iberville Parish. 4 exterior views.

Sheet 8, Side A. Belle Grove, Iberville Parish. 4 exterior views.

Sheet 8, Side B. Belle Grove, Iberville Parish. 5 interior views (2 half-size)

Sheet 9, Side A. Belmont, Iberville Parish. (10 total). 4 exterior views.

Sheet 9, Side B. Belmont, Iberville Parish. 4 exterior views.

Sheet 10, Side A. Belmont, Iberville Parish. 2 exterior views.  
 Bennett-Braeme House, East Feliciana Parish. (18 total). 2 exterior views.

Sheet 10, Side B. Bennett-Braeme House, East Feliciana Parish. 4 exterior views.

Sheet 11, Side A. Bennett-Braeme House, East Feliciana Parish. 4 exterior views.

Sheet 11, Side B. Bennett-Braeme House, East Feliciana Parish. 4 exterior views.

Sheet 12, Side A. Bennett-Braeme House, East Feliciana Parish. 3 exterior views; 1 interior.

Sheet 12, Side B. Bermuda, Natchitoches Parish. (2 total). 2 exterior views.  
 Bizet House, Pointe Coupee Parish. (5 total). 2 exterior views.

Sheet 13, Side A. Bizet House, Pointe Coupee Parish. 1 exterior view; 2 interior.  
 Calumet, St. Mary Parish. (3 total). 1 exterior view.

Sheet 13, Side B. Calumet, St. Mary Parish. 2 exterior views.



Chase House, East Feliciana Parish. (8 total). 2 exterior views.

Sheet 14, Side A. Chase House, East Feliciana Parish. 4 exterior views.

Sheet 14, Side B. Chase House, East Feliciana Parish. 2 exterior views.  
Chateau des Fleurs, St. Bernard Parish. (1 total). 1 exterior view.  
Chretien Point, St. Landry Parish. (11 total). 1 exterior view.

Sheet 15, Side A. Chretien Point, St. Landry Parish. 4 exterior views.

Sheet 15, Side B. Chretien Point, St. Landry Parish. 4 exterior views.

Sheet 16, Side A. Chretien Point, St. Landry Parish. 2 interior views.  
Claiborne, Iberville Parish. (1 total). 1 exterior view.  
Columbia, St. John the Baptist Parish. (5 total). 1 exterior view.

Sheet 16, Side B. Columbia, St. John the Baptist Parish. 1 exterior view; 3 interior.

Sheet 17, Side A. Conrad, East Baton Rouge Parish. (6 total). 4 exterior views.

Sheet 17, Side B. Conrad, East Baton Rouge Parish. 2 exterior views.  
Conseil, St. Bernard Parish. (2 total). 2 exterior views.

Sheet 18, Side A. Corinthian Cottage, St. Mary Parish. (2 total). 2 exterior views.  
The Cottage, West Feliciana Parish. (7 total). 2 exterior views.

Sheet 18, Side B. The Cottage, West Feliciana Parish. 2 exterior views; 2 interior.

Sheet 19, Side A. The Cottage, West Feliciana Parish. 1 interior view.  
Darby, St. Mary Parish. (5 total). 3 exterior views.

Sheet 19, Side B. Darby, St. Mary Parish. 2 exterior views.  
De Graffenreil, Morehouse Parish. (4 total). 2 exterior views.

Sheet 20, Side A. De Graffenreil, Morehouse Parish. 2 exterior views.  
Drake Place, Tensas Parish. (2 total). 2 exterior views.

Sheet 20, Side B. Duchaud Cottage, St. Martin Parish. (2 total). 2 exterior views.  
Ellerslie, West Feliciana Parish. (6 total). 2 exterior views.

Sheet 21, Side A. Ellerslie, West Feliciana Parish. 3 exterior views; 1 interior.

Sheet 21, Side B. Evergreen, Iberville Parish. (4 total). 2 exterior views; 2 interior.

Sheet 22, Side A. Fannie Riche, Pointe Coupee Parish. (5 total). 4 interior views.

Sheet 22, Side B. Fannie Riche, Pointe Coupee Parish. 1 interior view.  
Foster, St. Mary Parish. (3 total). 3 exterior views.

Sheet 23, Side A. Fusillier, St. Mary Parish. (3 total). 3 exterior views.  
Glendale, St. John the Baptist Parish. (6 total). 1 exterior view.

Sheet 23, Side B. Glendale, St. John the Baptist Parish. 3 exterior views; 1 interior.

Sheet 24, Side A. Glendale, St. John the Baptist Parish. 1 interior view.  
Greenwood, West Feliciana Parish.(11 total). 3 interior views.

Sheet 24, Side B. Greenwood, West Feliciana Parish. 4 exterior views.

Sheet 25, Side A. Greenwood, West Feliciana Parish. 4 exterior views.

Sheet 25, Side B. Grevemberg, St. Mary Parish. (4 total). 4 exterior views.

Sheet 26, Side A. Hebrard House, St. Landry Parish. (6 total). 4 exterior views.

Sheet 26, Side B. Hebrard House, St. Landry Parish. 2 exterior views.  
The Hermitage, Ascension Parish. (7 total). 2 exterior views.

Sheet 27, Side A. The Hermitage, Ascension Parish. 4 exterior views.

Sheet 27, Side B. The Hermitage, Ascension Parish. 1 exterior view.  
Hickory Hill, East Feliciana Parish. (10 total). 3 exterior views.

Sheet 28, Side A. Hickory Hill, East Feliciana Parish. 4 exterior views.

Sheet 28, Side B. Hickory Hill, East Feliciana Parish. 3 interior views.  
Highland, West Feliciana Parish. (6 total). 1 exterior view.

Sheet 29, Side A. Highland, West Feliciana Parish. 4 interior views.

Sheet 29, Side B. Highland, West Feliciana Parish. 1 interior view.  
Home Place, St. Charles Parish. (1 total). 1 interior view.  
Homestead, West Baton Rouge Parish. (8 total). 2 exterior views.

Sheet 30, Side A. Homestead, West Baton Rouge Parish. 4 exterior views.

Sheet 30, Side B. Homestead, West Baton Rouge Parish. 2 exterior views.  
Houmas House, Ascension Parish. (5 total). 2 exterior views.

Sheet 31, Side A. Houmas House, Ascension Parish. 1 exterior view; 2 interior.  
Keller, St. Charles Parish. (3 total). 1 exterior view.

- Sheet 31, Side B. Keller, St. Charles Parish. 2 interior views.  
Labatut, Pointe Coupee Parish. (3 total). 2 exterior views.
- Sheet 32, Side A. Labatut, Pointe Coupee Parish. 1 interior view.  
Lady of the Lake, Iberia Parish. (4 total). 2 exterior views; 1 interior.
- Sheet 32, Side B. Lady of the Lake, Iberia Parish. 1 interior view.  
Lestrapes Cottage, St. Landry Parish. (15 total). 3 exterior views.
- Sheet 33, Side A. Lestrapes Cottage, St. Landry Parish. 4 exterior views.
- Sheet 33, Side B. Lestrapes Cottage, St. Landry Parish. 4 exterior views.
- Sheet 34, Side A. Lestrapes Cottage, St. Landry Parish. 1 exterior view; 3 interior.
- Sheet 34, Side B. Le Jeune, Natchitoches Parish. (3 total). 3 exterior views.  
Le Veau, Pointe Coupee Parish. (8 total). 1 exterior view.
- Sheet 35, Side A. Le Veau, Pointe Coupee Parish. 4 exterior views.
- Sheet 35, Side B. Le Veau, Pointe Coupee Parish. 3 interior views.  
Live Oak, Iberville Parish. (6 total). 1 exterior view.
- Sheet 36, Side A. Live Oak, Iberville Parish. 2 exterior views; 2 interior.
- Sheet 36, Side B. Live Oak, Iberville, Parish. 1 interior view.  
Live Oak, West Feliciana Parish. (9 total). 3 exterior views.
- Sheet 37, Side A. Live Oak, West Feliciana Parish. 3 exterior views; 1 interior.
- Sheet 37, Side B. Live Oak, West Feliciana Parish. 2 interior views.  
Madewood, Assumption Parish. (3 total). 2 exterior views.
- Sheet 38, Side A. Madewood, Assumption Parish. 1 exterior view.  
Magnolia Mound, East Baton Rouge Parish. (9 total). 3 exterior views.
- Sheet 38, Side B. Magnolia Mound, East Baton Rouge Parish. 4 interior views.
- Sheet 39, Side A. Magnolia Mound, East Baton Rouge Parish. 2 interior views.  
Mandy Woodward, East Feliciana Parish. (2 total). 2 exterior views.
- Sheet 39, Side B. Mary, St. Bernard Parish. (3 total). 2 exterior views; 1 interior.  
Matthew Bell, St. Mary Parish. (1 total). 1 exterior view.
- Sheet 40, Side A. Melrose, Natchitoches Parish. (2 total). 1 exterior view; 1 interior.

- Mon Plaisir, Plaquemines Parish. (1 total). 1 exterior view.  
Mt. Airy, St. John the Baptist Parish. (2 total). 1 exterior view.
- Sheet 40, Side B. Mt. Airy, St. John the Baptist Parish. 1 exterior view.  
Oak Lawn, St. Mary Parish. (1 total). 1 exterior view.  
Ormond, St. Charles Parish. (7 total). 1 exterior view; 1 interior.
- Sheet 41, Side A. Ormond, St. Charles Parish. 4 interior views.
- Sheet 41, Side B. Ormond, St. Charles Parish. 1 interior view.  
Pakenham Oaks, St. Bernard Parish. (1 total). 1 exterior view.  
Palmisano Cottage, Jefferson Parish. (6 total). 2 exterior views.
- Sheet 42, Side A. Palmisano Cottage, Jefferson Parish. 3 exterior views; 1 interior.
- Sheet 42, Side B. Parlange, Pointe Coupee Parish. (16 total). 4 exterior views.
- Sheet 43, Side A. Parlange, Pointe Coupee Parish. 4 exterior views.
- Sheet 43, Side B. Parlange, Pointe Coupee Parish. 4 exterior views.
- Sheet 44, Side A. Parlange, Pointe Coupee Parish. 2 exterior views; 2 interior.
- Sheet 44, Side B. Parlange, Pointe Coupee Parish. 2 interior views.  
Pelican, St. Charles Parish. (2 total). 2 exterior views.
- Sheet 45, Side A. Pleasant View Farms, Pointe Coupee Parish. (5 total). 4 exterior views.
- Sheet 45, Side B. Pleasant View Farms, Pointe Coupee Parish. 1 exterior view.  
Prescott House, St. Landry Parish. (4 total). 3 exterior views.
- Sheet 46, Side A. Prescott House, St. Landry Parish. 1 exterior view.  
Prudhome, Natchitoches Parish. (2 total). 2 exterior views.  
Ramsay, Pointe Coupee Parish. (7 total). 1 exterior view
- Sheet 46, Side B. Ramsay, Pointe Coupee Parish. 4 exterior views.
- Sheet 47, Side A. Ramsay, Pointe Coupee Parish. 2 exterior views.  
Rienzi, LaFourche Parish. (3 total). 2 exterior views.
- Sheet 47, Side B. Rienzi, LaFourche Parish. 1 exterior view.  
Ringrose, St. Landry Parish. (1 total). 1 exterior view.  
Rosebank, West Feliciana Parish. (3 total). 2 exterior views.
- Sheet 48, Side A. Rosebank, West Feliciana Parish. 1 exterior view.  
St. Claire, St. Bernard Parish. (3 total). 3 exterior views.

- Sheet 48, Side B. St. Denis, Pointe Coupee Parish. (5 total). 4 exterior views.
- Sheet 49, Side A. St. Denis, Pointe Coupee Parish. 1 exterior view.  
San Francisco, St. John the Baptist Parish. (2 total). 1 exterior view;  
1 interior.  
Seven Oaks, Jefferson Parish. (8 total). 1 exterior view.
- Sheet 49, Side B. Seven Oaks, Jefferson Parish. 4 exterior views.
- Sheet 50, Side A. Seven Oaks, Jefferson Parish. 3 exterior views.  
The Shades, East Feliciana Parish. (12 total). 1 exterior view.
- Sheet 50, Side B. The Shades, East Feliciana Parish. 4 interior views.
- Sheet 51, Side A. The Shades, East Feliciana Parish. 4 exterior views.
- Sheet 51, Side B. The Shades, East Feliciana Parish. 3 interior views.  
Judge Simon's House, St. Martin Parish. 1 exterior view.
- Sheet 52, Side A. Simeon Smith, St. Mary Parish. (9 total). 4 exterior views.
- Sheet 52, Side B. Simeon Smith, St. Mary Parish. 4 exterior views.
- Sheet 53, Side A. Simeon Smith, St. Mary Parish. 1 exterior view.  
Spanish House, Natchitoches Parish. (4 total). 3 exterior views.
- Sheet 53, Side B. Spanish House, Natchitoches Parish. 1 interior view.  
Splane, St. Landry Parish. (6 total). 3 exterior views.
- Sheet 54, Side A. Splane, St. Landry Parish. 2 exterior views; 1 interior.  
Stone House, East Feliciana Parish. (7 total). 1 exterior view.
- Sheet 54, Side B. Stone House, East Feliciana Parish. 4 exterior views.
- Sheet 55, Side A. Stone House, East Feliciana Parish. 1 exterior view; 1 interior.  
Stonewall, Pointe Coupee Parish. (3 total). 2 exterior views.
- Sheet 55, Side B. Stonewall, Pointe Coupee Parish. 1 exterior view.  
Thistlethwaite, St. Landry Parish. (1 total). 1 exterior view.  
Three Oaks, St. Bernard Parish. (5 total). 2 exterior views.
- Sheet 56, Side A. Three Oaks, St. Bernard Parish. 3 exterior views.  
Trotscher Estate, St. Martin Parish. (2 total). 1 exterior view.
- Sheet 56, Side B. Trotscher Estate, St. Martin Parish. 1 exterior view.

Troy, West Feliciana Parish. (13 total). 4 exterior views. (2 on 1)

Sheet 57, Side A. Troy, West Feliciana Parish. 6 exterior views. (4 on 2)

Sheet 57, Side B. Troy, West Feliciana Parish. 3 exterior views.  
Uncle Sam, St. James Parish. (16 total). 1 exterior view.

Sheet 58, Side A. Uncle Sam, St. James Parish. 4 exterior views.

Sheet 58, Side B. Uncle Sam, St. James Parish. 4 exterior views.

Sheet 59, Side A. Uncle Sam, St. James Parish. 4 exterior views.

Sheet 59, Side B. Uncle Sam, St. James Parish. 3 exterior views.  
Voisin, St. John the Baptist Parish. (2 total) 1 exterior view.

Sheet 60, Side A. Voisin, St. John the Baptist Parish. 1 exterior view.  
Wakefield, West Feliciana Parish. (5 total). 3 exterior views.

Sheet 60, Side B. Wakefield, West Feliciana Parish. 2 interior views.  
Waverly, West Feliciana Parish. (20 total). 2 exterior views.

Sheet 61, Side A. Waverly, West Feliciana Parish. 4 exterior views.

Sheet 61, Side B. Waverly, West Feliciana Parish. 5 exterior views. (2 on 1)

Sheet 62, Side A. Waverly, West Feliciana Parish. 4 interior views.

Sheet 62, Side B. Waverly, West Feliciana Parish. 5 interior views. (2 on 1)

Sheet 63, Side A. Welcome Hall, Desoto Parish. (4 total). 3 exterior views; 1 interior.

Sheet 63, Side B. Whitney, St. John the Baptist Parish. (12 total). 4 exterior views.

Sheet 64, Side A. Whitney, St. John the Baptist Parish. 1 exterior view; 3 interior.

Sheet 64, Side B. Whitney, St. John the Baptist Parish. 4 exterior views.

Sheet 65, Side A. Woodlawn, Assumption Parish. (2 total). 2 exterior views.  
Woodward, East Feliciana Parish. (1 total). 1 exterior view.

Sheet 65, Side B. Zenon Trudeau, St. James Parish. (1 total). 1 exterior view.

**Photographic Negatives-- New Orleans by Street Address**

Number in parentheses indicates number of negatives.

Angela, 224.	(1)
Annunciation, 1321.	(7)
Barracks, 601-603.	(1)
Barracks, 641.	(1)
Barracks, 1003.	(2)
Bayou Road, 2257.	(4)
Bienville, 813.	(1)
Bienville, 826-828.	(2)
Bienville, 830-832, 834-836.	(1)
Bienville, 912, 916.	(1)
Bienville, 918-920.	(1)
Bienville, 924.	(1)
Bourbon, 227-229.	(2)
Bourbon, 238.	(6)
Bourbon, 508.	(1)
Bourbon, 516.	(2)
Bourbon, 612-614.	(1)
Bourbon, 629.	(1)
Bourbon, 633.	(2)
Bourbon, 701.	(2)
Bourbon, 721-725.	(1)
Bourbon, 739-741.	(1)
Bourbon, 941.	(3) (#1 & #2 Miss.)
Bourbon, 1303.	(1)
Bourbon, 1307.	(2)
Bourbon, 1303-1307.	(1)
Broadway, 514.	(2)
Burgundy, 701-703.	(1)
Burgundy, 819.	(5)
Burgundy, 911-913.	(1)
Burgundy, 1112-1114.	(1)
Burgundy, 1118-1120, 1122.	(1)
Burgundy, 1131.	(1)
Burgundy, 1213-1215.	(1)
Burgundy, 1218.	(6)
Burgundy, 1218-1220.	(5)
Burgundy, 2039.	(2)
Calliope, 1118-1120.	(1)
Camp, 818.	(1)
Camp, 822.	(2)
Camp, 901-903-907-911-913.	(6)
Camp, 944.	(3)
Camp, 1021.	(5)
Camp, 1067.	(2)
Camp, 1069-1071-1077.	(3)

Canal, 423.	(7)
Canal, Christ Church.	(4)
Carondelet, 637-639-641-643.	(4)
Carondelet, 1908-1910.	(1)
Carondelet, 3603.	(1)
Carondelet, 3611.	(1)
Chartres, 313.	(2)
Chartres, 335-337.	(1)
Chartres, 440.	(2)
Chartres, 500.	(18)
Chartres, 514.	(3)
Chartres, 524, 526, 530-534, 536-538-542.	(1)
Chartres, 526.	(1)
Chartres, 530-534.	(1)
Chartres, 536-540.	(5)
Chartres, 536-538-542.	(7)
Chartres, 600.	(1)
Chartres, 617.	(1)
Chartres, 619.	(2)
Chartres, 625.	(3)
Chartres, 1013-1015.	(1)
Chartres, 1013-1015, 1019, 1023.	(1)
Chartres, 1027-1029.	(1)
Chartres, 1040.	(1)
Chartres, 1133-1135.	(3)
Chartres, 2409-2411.	(8)
Chartres, 2718-2720.	(1)
Chartres, 3933.	(3)
Chartres, 4111.	(28)
Coliseum, 1741.	(1)
Coliseum, 1749.	(20)
Coliseum, 4440.	(1)
Congress, 619.	(4)
Constance, 1458.	(4)
Conti, 526.	(1)
Conti, 618-624.	(1)
Conti, 741.	(6)
Dauphine, 418.	(2)
Dauphine, 513-515.	(3)
Dauphine, 614.	(1)
Dauphine, 625-627.	(3)
Dauphine, 633.	(15)
Dauphine, 715.	(2)
Dauphine, 716.	(5)
Dauphine, 831-833.	(1)
Dauphine, 903-905-907.	(1)



Dauphine, 1012-1014.	(3)
Dauphine, 1033.	(1)
Dauphine, 1809-1811.	(1)
Dauphine, 1825-1827.	(1)
Dauphine, 4580.	(2)
Decatur, 601-605-607.	(1)
Decatur, 1101-1139.	(1)
Decatur, 1227-1241.	(1)
Decatur, 1238.	(1)
Decatur, 1241.	(2)
Decatur, 1301-1303.	(1)
Decatur, 1301-1327.	(2)
Decatur, 1301.	(1)
Decatur, 2741.	(19)
Dryades, 1139.	(4)
Dumaine, 612.	(11)
Dumaine, 627-629.	(1)
Dumaine, 707-709.	(2)
Dumaine, 731-733.	(3)
Dumaine, 741-743.	(2)
Dumaine, 831.	(3)
Dumaine, 1016-1018.	(1)
Dumaine, 1321.	(5)
Esplanade, 400.	(7)
Esplanade, 529, 533.	(1)
Esplanade, 600.	(4)
Esplanade, 604.	(2)
Esplanade, 627.	(1)
Esplanade, 740.	(2)
Esplanade, 908.	(3)
Euterpe, 1524.	(1)
Exchange Alley, 301.	(1)
Exchange Place, 301-05-07-09-11-13.	(1)
First, 1239.	(5)
First, 1315.	(2)
Fourth, 1020.	(3)
Fourth, 1227.	(1)
Frenchman, 924-926.	(1)
Frenchman, 928-930.	(1)
French Market Place, 95-97.	(4)
Girod, 719-721-723.	(4)
Governor Nicholls, 716, 724.	(7)
Governor Nicholls, 726-728.	(1)
Governor Nicholls, 831.	(1)
Governor Nicholls, 913.	(2)
Governor Nicholls, 919.	(1)

Governor Nicholls, 928, 932.	(4)
Governor Nicholls, 1024.	(1)
Governor Nicholls, 1201-1203.	(4)
Harmony, 1134.	(3)
Howard Avenue, 534.	(32)
Howard Avenue, 619.	(1)
Independence, 619-621.	(3)
Independence, 739-741.	(2)
Jackson Avenue, 1129.	(4)
Jackson Avenue, 1207.	(6)
Jackson Avenue, 1237.	(2)
Jackson Avenue, 1302-1306.	(2)
Jackson Avenue, 1314.	(4)
Jackson Avenue, 1329.	(2)
Jackson Avenue, 1333.	(1)
Jackson Avenue, 1410.	(2)
Jackson Barracks.	(4)
Jackson Square.	(13)
Josephine, 739-741.	(1)
Josephine, 807-09-11-13-15.	(3)
Josephine, 825.	(2)
Josephine, 1421.	(1)
Julia, 600-644.	(1)
Julia, 610.	(1)
Lafayette (Gretna), 205.	(2)
Lafayette Cemetery.	(1)
Magazine, 305.	(1)
Magazine, 331.	(5)
Magazine, 1441.	(3)
Magazine, 1529.	(1)
Magazine, 2715.	(1)
Magazine, 2855.	(3)
Mandeville, 613-613½.	(1)
Mandeville, 700-702.	(3)
Market, 401-451.	(2)
Moss, 1342.	(3)
Moss, 1400.	(1)
Napoleon, 1025.	(3)
North Liberty, 828.	(1)
North Rampart, 228.	(1)
North Rampart, 232.	(3)
Orange, 611-615.	(3)
Orleans, 700.	(1)
Orleans, 706-08-10.	(2)
Orleans, 714.	(1)
Orleans, 834.	(1)

Orleans, 910.	(1)
Orleans, 912.	(1)
Pauger, 1436.	(1)
Pauger, 1508.	(1)
Poydras, 415.	(1)
Poydras, 429.	(1)
Prytania, 1823.	(1)
Prytania, 2127.	(7)
Prytania, 2401.	(1)
Prytania, 2405.	(1)
Prytania, 2423.	(1)
Prytania, 2507.	(2)
Prytania, 2520.	(2)
Prytania, 2605.	(3)
Race, 909-911.	(1)
Race, 917.	(2)
Richard, 700-48.	(2)
Royal, 339.	(1)
Royal, 344.	(1)
Royal, 401.	(9)
Royal, 413.	(5)
Royal, 417.	(2)
Royal, 525-27-29-33.	(2)
Royal, 534-536.	(3)
Royal, 539-541.	(3)
Royal, 600.	(1)
Royal, 601-03-05-07.	(1)
Royal, 612.	(3)
Royal, 613.	(1)
Royal, 623.	(3)
Royal, 624.	(2)
Royal, 631.	(1)
Royal, 640.	(5)
Royal, 700.	(2)
Royal, 712.	(3)
Royal, 822-24-26.	(1)
Royal, 830.	(7)
Royal, 900.	(3)
Royal, 1036.	(4)
Royal, 1141.	(2)
Royal, 2701.	(1)
St. Andrew, 1426.	(1)
St. Ann, 625.	(1)
St. Ann, 637-39.	(2)
St. Ann, 813-15.	(1)
St. Ann, 817-819.	(10)

St. Ann, 822-24.	(9)
St. Ann, 826.	(2)
St. Ann, 917.	(34)
St. Ann, 928.	(4)
St. Charles, 441-445.	(2)
St. Charles, 545.	(3)
St. Charles, 1109.	(1)
St. Charles, 1311-15.	(3)
St. Charles, 2265.	(1)
St. Charles, 2524.	(7)
St. Charles, 2702.	(2)
St. Charles, 2855.	(36)
St. Charles, 3005.	(5)
St. Charles, 3900.	(2)
St. Charles, 4007.	(7)
St. Charles, 5318.	(6)
St. Claude, 1119.	(2)
St. Louis Cemetery No. 1.	(15)
St. Louis Cemetery No. 2.	(1)
St. Louis, 531.	(1)
St. Louis, 533.	(6)
St. Louis, 716.	(1)
St. Louis, 908.	(3)
St. Louis, 1016.	(3)
St. Louis, 1026-30.	(1)
St. Louis, 1032.	(3)
St. Mary, 709-11-13-15-17-19.	(1)
St. Mary, 709.	(1)
St. Mary, 717.	(1)
St. Mary, 719.	(1)
St. Peter, 600-700 block.	(1)
St. Peter, 616.	(1)
St. Peter, 627-639.	(1)
St. Peter, 714.	(1)
St. Peter, 723-25.	(2)
St. Peter, 726.	(4)
St. Peter, 729.	(1)
St. Peter, 836.	(1)
St. Peter, 1019-21.	(1)
St. Peter, 1029-33.	(1)
St. Philip, 726-728.	(1)
St. Philip, 730-732.	(3)
St. Philip, 823-25.	(2)
St. Philip, 827-29.	(5)
St. Philip, 831-33.	(1)
St. Philip, 910.	(1)

St. Philip, 911.	(1)
St. Philip, 919.	(10)
St. Philip, 931-33.	(7)
St. Philip, 1007-09.	(8)
St. Philip, 1012.	(1)
St. Philip, 1023-25.	(1)
St. Thomas, 1601-41.	(2)
Second, 1410.	(3)
Second, 1632-34.	(1)
Second, 1636-38.	(1)
Simon Bolovar, 1417-19.	(1)
South, 614.	(1)
South Liberty, 205.	(5)
Spanish Fort.	(1)
South Rampart, 153.	(10)
Tchoupitoulas, 923.	(1)
Tchoupitoulas, 1601-43.	(1)
Third, 1415.	(3)
Third, 1524.	(2)
Third, 1530.	(2)
Toulouse, 514-16-18.	(3)
Toulouse, 628.	(6)
Toulouse, 631.	(3)
Toulouse, 633.	(1)
Toulouse, 705.	(1)
Toulouse, 719.	(1)
Toulouse, 723.	(21)
Toulouse, 725-27-29.	(2)
Toulouse, 826.	(4)
Toulouse, 828.	(2)
Toulouse, 906.	(1)
Toulouse, 907.	(1)
Toulouse, 917.	(1)
Toulouse, 926.	(1)
Toulouse, 927.	(1)
Touro, 731-33-37.	(1)
Tulane, 1532.	(13)
Ursuline, unidentified.	(1)
Ursuline, 1026-30.	(2)
Washington, 536.	(3)
Washington, 935.	(1)
Washington, 1136-1138.	(1)
Washington, 1226.	(2)
Washington, 1239.	(1)

## **Mississippi, by town**

Biloxi, MS, Unidentified House (2)  
Church Point Hill, MS, Union Church (4)  
Fort Adams, MS, Walnut Grove Plantation House (10)  
Liberty, MS, Unidentified Fireplace Mantels (4)  
Natchez, MS, Arlington (9)  
Natchez, MS, Auburn (2)  
Natchez, MS, Briars (4)  
Natchez, MS, The Burn  
Natchez, MS, Carmel Church (4)  
Natchez, MS, Concord (5)  
Natchez, MS, Devereux (6)  
Natchez, MS, Dixie Plantation House (4)  
Natchez, MS, Dunleith Plantation (3)  
Natchez, MS, Elgin Plantation House (2)  
Natchez, MS, Ellicott Hall (2)  
Natchez, MS, Ellis (5)  
Natchez, MS, Elms (6)  
Natchez, MS, Gloucester (9)  
Natchez, MS, Gloucester Plantation House (2)  
Natchez, MS, Lansdowne Plantation House (3)  
Natchez, MS, Laurel Hill Chapel  
Natchez, MS, Linden Plantation House  
Natchez, MS, Magnolia Plantation House  
Natchez, MS, Mazique Plantation House (6)  
Natchez, MS, Melrose Plantation House  
Natchez, MS, Mistletoe Plantation House  
Natchez, MS, Monmouth Plantation House  
Natchez, MS, Mt. Repose Plantation House (4)  
Natchez, MS, Homewood Plantation House (2)  
Natchez, MS, Ravenna (8)  
Natchez, MS, Richmond (3)  
Natchez, MS, Rosalie (18)  
Natchez, MS, Unidentified (21)  
Natchez, MS, Unidentified Building  
Natchez, MS, Unidentified Fireplace Mantel (3)  
Natchez, MS, Unidentified Gate  
Natchez, MS, Unidentified House (8)  
Natchez, MS, Unidentified House on Woodville Road (6)

## **Outside United States (by country)**

Mexico (Unidentified)	(110)
Yucatan, Mexico	(92)
Avignon, France	(7)

France (Unidentified)	(20)
Germany (Unidentified)	(44)
Greece (Unidentified)	(13)
Gibraltar (Unidentified)	(5)
Cordoba, Spain	(22)
Granada, Spain	(50)
Avila, Spain	(3)
Barcelona, Spain	(8)
Cuenca, Spain	(8)
Guadelupe, Spain	(23)
Leon, Spain	(11)
Lugo, Spain	(3)
Osana, Spain	(5)
Palma, Spain	(20)
Port of Spain, Trinidad	(12)
Ronda, Spain	(11)
Salamanca, Spain	(8)
Santiago, Spain	(16)
Seville, Spain	(84)
Siquenza, Spain	(8)
Southern Spain	(2)
Spanish Town, Spain	(13)
Tarazoua, Spain	(4)
Toledo, Spain	(19)
Tarragona, Spain	(16)
Utera, Spain	(1)
Valencia, Spain	(4)
Vigo, Spain	(5)
Spain (Unidentified)	(24)
Bridge Town Barbados	(23)
Georgetown, Guyana	(18)
Pointe a Pitre, Guadeloupe	(22)
Jamaica (Unidentified)	(24)
Kingston, Jamaica	(27)
Mt. Pelee, Martinique	(9)
Port of France, Martinique	(18)
Tangier, Morocco	(26)
Paramaribo, Suriname	(28)

**Glass Plate Negatives.**

Glass plate negatives (circa 1880-1910s) collected by Richard Koch.

**Box 1.**

## Buildings – Vieux Carre.

1. View of buildings in lake side of 400 block of Chartres Street.
2. View of buildings in lake side of 400 block of Chartres Street.
3. View of buildings in lake side of 1300 block of Chartres Street.
4. View down Exchange Alley looking from Bienville Street to the St. Louis Hotel.
5. View in Exchange Alley looking toward the St. Louis Hotel.
6. View down Exchange Alley looking from the St. Louis Hotel toward Canal Street.  
DAMAGED.
7. View down Exchange Alley looking from Conti Street toward Canal Street.
8. View of buildings at 301-313 Exchange Alley.
9. View of Jackson Square looking from Decatur Street toward St. Louis Cathedral.
10. View down Pere Antoine Alley looking from Chartres Street toward Royal.
11. View down Pirate's Alley looking from Chartres Street toward Royal.
12. View of buildings in River Side of 400 Block of Royal Street.
13. View of buildings in River Side of 400 Block of Royal Street.
14. Stair in carriageway of unidentified house in river side of 400 block of Royal Street.
15. View of Patio at 520 Royal Street.
16. View of Patio at 520 Royal Street.
17. View of building at 640 Royal Street.
18. View of buildings in uptown side of 600 block of St. Louis Street. DAMAGED.
19. Southern Exchange, St. Louis and Chartres Streets.
20. Southern Exchange, St. Louis and Chartres Streets.
21. View of building at corner of St. Louis Street and Exchange Alley (?)
22. View in courtyard (?) of unidentified building.
23. View of base of column of unidentified building.
24. Unidentified building.
25. Same unidentified building.
26. Same unidentified building.

## Buildings – New Orleans, outside the Vieux Carre.

27. Christ Church Cathedral, St. Charles Avenue.
28. Grace Church, Rampart Street.
29. Building at Jackson Barracks.
30. Ocean Saw Mill (glass plate positive).
31. Ocean Saw Mill (glass plate positive).
32. Hotel at Spanish Fort.
33. Cistern, greenhouse and wing of unidentified house.
34. Corner of unidentified building and palm tree.
35. Gallery and outside stairway of unidentified plantation house.
36. View in parlor of unidentified house.

## People, Scenes, and Etc.

37. Unidentified old woman, reading.



38. Unidentified old woman with a veil.
39. Unidentified old woman with a veil (close-up).
40. Unidentified young woman in a garden.
41. Unidentified seated young woman.
42. Unidentified seated young woman.
43. Unidentified woman with tignon and fan.
44. Unidentified seated woman.
45. Unidentified seated woman.
46. Unidentified seated man and girl.
47. Unidentified children and woman in swing.
48. Unidentified boy and girl.
49. Unidentified boy in confederate uniform.
50. Unidentified people at gate.
51. Unidentified persons.
52. Rural cabin with unidentified people.
53. Sugar cane cutters in a field.
54. Unidentified children on banks of lagoon.
55. Unidentified children on banks of lagoon.
56. Unidentified children in skiff.
57. View of trees.
58. View of carriage, bridge and trees.
59. View of hills, stream and trees.
60. View of hills, stream and trees.
61. View of stream, trees and bridge.
62. Close-up of bush.
63. Close-up of bush.
64. Vase of hydrangeas.

## **Box 2.**

Hurricane (1915).

1. Hurricane (1915).
2. Hurricane (1915).
3. Hurricane (1915).
4. Hurricane (1915).
5. N.O. Hurricane (1915).
6. Hurricane (1915).
7. Hurricane (1915).
8. Hurricane (1915).
9. Hurricane (1915).

John Norris Teunisson.

10. Clothespole Man.
11. Henry Clay Monument, Canal Street, N.O.

12. Arrival of the Royal Yacht (Rex).
13. Carnival Parade and Crowds.
14. Bird's Eye View.
15. Store Interior.
16. President McKinley at the Mardi Gras 2.
17. President McKinley at the Mardi Gras 1.
18. President McKinley
19. Laying Cornerstone, Prytania Street Church.
20. Dignitaries on a Speaker's Stand.
21. Top-Hatter Dignitaries.
22. Daquerreotype.
23. Ceremony at Army of Northern Virginia Monument.
24. Canal Street West from Clay Statue (circa 1880).
26. Clay Statue, Canal Street (circa 1880).
27. Alhambra Plantation.
28. Plantation Bell.
29. Carnival-Street Scene.
30. Carnival-Street Scene.

### **Box 3.**

John Norris Teunisson

31. Cabildo
32. St. Louis Cathedral.
33. Carnival-Street Scene.
34. Carnival-Street Scene.
35. Carnival-Street Scene.
36. Carnival-Street Scene.
37. Carnival-Street Scene.
38. Carnival-Street Scene.
39. Carnival-Street Scene.
40. Carnival-Street Scene.
64. View of Water from Dock.
65. View of Broken Bridge.
66. Camp Michaels.
67. Camp Michaels.
68. Camp Michaels.
287. Carnival (1902).
291. Old View of Royal Street.
298. Carnival (1902).
299. Carnival (1902).
300. Carnival (1902).
301. Carnival (1902).
302. Carnival (1902).
347. Hurricane (1915).

- 348. Hurricane (1915).
- 349. Hurricane (1915).
- 350. Hurricane (1915).

**Box 4.**

- 352. Landing Scene.
- 353. Spanish Fort Scene.
- 354. Landing Scene – Hay Wagon.
- 355. Spanish Fort – Main Building.
- 356. Wood Loading Scene.
- 357. Charles Brulard.
- 358. Spanish Fort Train Station (Mission Style).
- 359. Spanish Fort Scene – View of Rock Pile and Station.
- 360. Spanish Fort Scene – Pond and Fountain View.
- 361. Spanish Fort DAMAGED.
- 362. Spanish Fort Scene – Cannon.
- 363. Spanish Fort Path with View of Station.
- 364. Spanish Fort - New Orleans Railway and Light Company Track.
- 365. Spanish Fort Scene DAMAGED.
- 366. Leonhard's Casino. Lake Pontchartrain. DAMAGED.
- 367. Overflow at West End.
- 368. Spanish Fort – Front Entrance.
  - Georges Francois Mugnier. Fruit Stand, French Market. DAMAGED.
  - Old Parish Prison.
- 401. John Norris Teunisson. Motorists Bugged Down (1919).
- 402. Manuscript map by Adriaen De Pauwer, entitled *Plan particulier de l'Embouchure du fleuve St. Louis* (1724).
- 403. Engraved map of New Orleans. Jacques Nicolas Bellin.

**Box 5.**

- 369. Georges Francois Mugnier. Citizens Bank New Orleans, \$10 Note.
- 370. John Norris Teunisson. Setting up Cannon at Confederate Memorial Hall, Camp Street. Undated. \*Broken into 2 pieces.
- 371. Georges Francois Mugnier. Barges at Dockside, Mississippi River. Undated.
- 372a-b. John Norris Teunisson. Unidentified group of men on steps of unidentified building. Circa 1914 – 1918. \*2 copies of same image.
- 373. Georges Francois Mugnier. Bird's Eye View of Levee at French Market. Undated. \*Missing corner.
- 374. John Norris Teunisson. Southern Yacht Club. Undated.
- 375. Georges Francois Mugnier. Tomb of John McDonogh. Undated.
- 376. Georges Francois Mugnier. Citizens' Bank, New Orleans, "Dix" ten dollar note. Undated.
- 377. Georges Francois Mugnier. Relief of Livingston, Monroe, and Barbe-Marbor's signing Louisiana Purchase contract, 1803. Undated.
- 378. Georges Francois Mugnier. Bazaar, French Market, includes Red Stores. Undated. \*Missing

corner.

379. John Norris Teunisson. Canal Street. Undated.
380. Georges Francois Mugnier. United States Custom House, Canal Street. Undated.
381. Georges Francois Mugnier. Louisville and Nashville Railroad Station. Undated.
382. Georges Francois Mugnier. Levee View. Undated.
383. Georges Francois Mugnier. French Opera House, Bourbon Street. Undated.
384. French Opera House, Bourbon Street. \*Not glass plate.
385. John Norris Teunisson. Canal Street, includes Maison-Blanche Store. Circa 1890s.
386. Georges Francois Mugnier. Plan of Fort Baton Rouge, by Tardieu. Undated.
387. Georges Francois Mugnier. St. Charles Avenue at Lee Circle, includes L.W. Bidwell's Theater. Undated.
388. Georges Francois Mugnier. Old Bank, Toulouse Street. Undated.
389. Georges Francois Mugnier. Schooners at Sugar Wharf. Undated.

#### **Box 6.**

390. Georges Francois Mugnier. Schooners and Luggers at the Levee. Undated.
391. Unidentified event with unidentified people in tent labelled Abeille. Undated. \* Missing corner.
392. Steamboat, Thomas Fr...? (illegible). Undated.
393. Unidentified chemical laboratory. Undated.
394. Unidentified sugar mill. Undated.
395. Unidentified people on unidentified lake/river yacht. Undated.
396. Unidentified people at unidentified club house, possibly, near Lake Pontchartrain. Undated.  
\*Broken into 3 pieces.
397. Unidentified glee club. Undated.
398. Map of Town and Fort of Natchez, by Tardieu. Undated.
399. Louisville and Nashville Railroad Station, coaches in yard. Undated.
400. Georges Francois Mugnier. Lee Monument at Lee Circle. Undated.
401. John Norris Teunisson . Hotel Royal (St. Louis Hotel), Royal Street. Undated. \*Broken into 3 pieces.
402. Fire Engine on Canal Street. Undated.
403. John Norris Teunisson. President Taft during his visit to New Orleans. Undated.
404. Georges Francois Mugnier. Lover's Walk, West End. Undated.
405. Grand Opera House, Canal Street. Undated.
406. John Norris Teunisson. Mississippi River, Ice Flow 1899.
407. John Norris Teunisson. S.H. Antillian at Docks. Undated.
408. John Norris Teunisson. Canal Street. Undated.
409. John Norris Teunisson. Carnival at City Hall (Gallier Hall). Undated.
410. John Norris Teunisson. Chartres Street with unidentified children in front of Beauregard House. Undated. \*Broke into 2 pieces.

#### **Box 7.**

411. French Opera House, Bourbon Street, Interior from Stage on Opening Night 1902, *Les Huguenots*.

412. John Norris Teunisson. Canal Street, 1904.  
 413. John Norris Teunisson. Canal Street. Undated.  
 414. Georges Francois Mugnier. Henry Clay Monument, Canal Street. Undated. \*Broken with previous tape repair.  
 415. John Norris Teunisson. President Taft during his visit to New Orleans. Undated. View similar to #416. \*Broken into 2 pieces.  
 416. John Norris Teunisson. President Taft during his visit to New Orleans. Undated. View similar to #415.  
 417. John Norris Teunisson. President Taft during his visit to New Orleans. Undated.  
 418. Georges Francois Mugnier. Bird's Eye View of Docks and Lower City. Undated.  
 419. John Norris Teunisson. *The Sidney*, of the Streckfus Line in Mississippi River. Undated. \*Broken into 2 pieces.  
 500. Georges Francois Mugnier. The Old Absinthe House. Undated. \*Broken into 3 pieces.  
 501. John Norris Teunisson. Lugger Landing. Undated. \*Broken into 2 pieces.  
 502. Unidentified power plant. Undated. \*Broken into 6 pieces with previous tape repair.

### **Box 8.**

Two 14" x 11" glass plate negatives—John Norris Teunisson . George Soule Family. Undated.  
 \*One plate broken into 2 pieces, one plate missing corner.

### **Correspondence Files and Drawings.**

#### **Box 1. Correspondence.**

Personal correspondence, 1939-42.  
 Personal correspondence, 1943-48.  
 Personal correspondence, 1949-50.  
 New Orleans Architectural Draftsman Advisory Apprenticeship Committee.  
 Correspondence and legal documents. 1950s.

#### **Box 2. Correspondence.**

Koch, Richard, Christmas card, 1969.  
 Cruise, Boyd.  
 Federal Public Housing, Architectural Advisory Committee.  
 Gargoyle Society.  
 Greystone Press.  
 Institutions-Post war planning.  
 Latrobe data.  
 Lectures.  
 Louisiana Architects Association.  
 Rich's competition, Atlanta.  
 Summer Pops Concerts.

Rose, William.

**Box 3.** Correspondence.

AIA, Commission for the Survey of Education and Registration.

**Box 4.** Correspondence.

AIA, Commission for the Survey of Education and Registration, 1949-53.  
National Architectural Accrediting Board, 1952-53. 2 folders.  
AIA, miscellaneous correspondence, 1930-32.

**Box 5.** Correspondence.

Vieux Carre Association, Inc. Correspondence. 1926-27.  
Vieux Carre Association, Inc. Correspondence. 1928-30.  
Vieux Carre Commission. Correspondence. 1930-39.  
Vieux Carre Commission. Architectural Committee. 1947-49.  
Vieux Carre Commission. Correspondence. 1949.  
Vieux Carre Commission. Correspondence. 1950-51.  
City of New Orleans c. Bernard Weil. Motion to Quash. 1951.  
Vieux Carre Commission. Correspondence. 1952-53.

**Box 6.** Correspondence.

American Institute of Architects/Octagon Book Project, 1927-30.  
American Institute of Architects/Octagon Book Project, 1930-32.  
American Institute of Architects/Octagon book Project, Tebbs and Knell  
Photographs, 1932-36.  
Historic American Buildings Survey, administrative (reports and sponsorship),  
1934-41.  
Historic American Buildings Survey, miscellaneous correspondence, 1937-40.  
(See also: Box 23)  
Historic American Buildings Survey, administrative (memoranda and forms), 1958-60.  
Historic American Buildings Survey, miscellaneous correspondence, 1957-64.  
Photographic Invoices and Advertisements, 1923-42.

**Box 7.** Richard Koch, biographical information and photographs.

Armstrong and Koch, library inventory.  
Richard Koch, sketches, New Orleans, Massachusetts, France, and Switzerland.  
Richard Koch, Spanish sketches, 1924.  
St. James Parish information.  
West Feliciana Parish information.  
Historical data projects.  
Belle Grove plantation correspondence.  
Bienville Plaza correspondence.

Lemee House, correspondence.

**Box 8.** Historic American Buildings Survey, Research Material, New Orleans.

- Square 14, North Peters, Decatur. 1200 block.
  - Governor Nicholls, Barracks. 400 block.
- Square 19, Chartres, Decatur. 1100 block.
  - Ursulines, Governor Nichols. 500 block.
- Square 20, Decatur, Chartres. 500 block.
  - St. Philip, Ursulines. 800 block.
- Square 21, Chartres, Decatur. 900 block.
  - Dumaine, St. Philip. 500 block.
- Square 22, Chartres, Decatur. 800 block.
  - Madison, Dumaine. 900 block.
- Square 23, Chartres, Decatur. 800 block.
  - St. Ann, Madison. 500 block.
- Square 24, Chartres, Decatur. 700 block.
  - St. Peter, St. Ann. 500 block.
- Square 28, Chartres, Decatur. 500 block.
  - Conti, St. Louis. 500 block.
- Square 28, Chartres, Decatur. 300 block.
  - Bienville, Conti. 500 block.
- Square 33-
- Square 34, Royal, Chartres. 100 block.
  - Canal, Iberville. 600 block.

**Box 9.** Historic American Buildings Survey, Research Material, New Orleans.

- Square 37-
- Square 40, Royal, Chartres. 500 block.
  - Bienville, Conti. 600 block.
  - Royal, Chartres. 400 block.
  - Conti, St. Louis. 600 block.
- Square 41, Royal, Chartres. 700 block.
  - St. Louis, Toulouse. 600 block.
- Square 44, Royal, Chartres. 700 block.
  - St. Peter, Orleans. 600 block.
- Square 46, Royal, Chartres. 700 block.
  - Pere Antoine Alley, St. Ann. 600 block.

**Box 10.** Historic American Buildings Survey, Research Material, New Orleans.

- Square 47, Chartres, Royal. 800 block.
  - St. Ann, Dumaine. 600 block.
- Square 48, Royal, Chartres. 900.
  - Dumaine, St. Philip. 600.
- Square 49, Royal, Chartres. 1000 block.
  - St. Philip, Ursuline. 600 block.
- Square 51, Royal, Chartres. 1200 block.

Governor Nicholls, Barracks. 600 block.  
Square 52, Chartres, Royal. 1300 block.  
Barracks, Esplanade. 600 block.  
Square 53, Royal, Bourbon. 1300 block.  
Barracks, Esplanade. 700 block.

**Box 11.** Historic American Buildings Survey, Research Material, New Orleans.

Square 54, Royal, Bourbon. 1200 block.  
Governor Nicholls, Barracks. 700 block.  
Square 55, Royal, Bourbon. 1100 block.  
Ursuline, Governor Nicholls. 800 block.  
Square 56, Royal, Bourbon. 1000 block.  
St. Philip, Ursuline. 700 block.  
Square 57, Royal, Bourbon. 100 block.  
Dumaine, St. Philip. 700 block.  
Square 58, Royal, Bourbon. 800 block.  
St. Ann, Dumaine. 700 block.  
Square 59, Royal, Bourbon. 700 block.  
Orleans, St. Ann. 700 block.  
Square 60, Royal, Bourbon. 700 block.  
St. Peter, Orleans. 700 block.

**Box 12.** Historic American Buildings Survey, Research Material, New Orleans.

Square 61, Royal, Bourbon. 600 block.  
Toulouse, St. Peter. 700 block.  
Square 62, Royal. 500 block.  
Bourbon. 500 block.

**Box 13.** Historic American Buildings Survey, Research Material, New Orleans.

Square 63, Royal, Bourbon. 400 block.  
Conti, St. Louis. 700 block.  
Square 64-65, Royal, Bourbon. 200-300 block.  
Iberville, Bienville, Conti. 700 block.  
Square 68, Bourbon, Dauphine. 200 block.  
Iberville, Bienville. 800 block.  
Square 70, Bourbon, Dauphine. 400 block.  
Conti, St. Louis. 800 block.  
Square 71, Bourbon, Dauphine. 500 block.  
St. Louis, Toulouse. 800 block.

**Box 14.** Historic American Buildings Survey, Research Material, New Orleans.

Square 72, Bourbon, Dauphine. 600 block.  
Toulouse, St. Peter. 800 block.  
Square 73-74, Bourbon, Dauphine. 700 block.  
St. Peter, Orleans, St. Ann. 800 block.  
Square 77, Bourbon, Dauphine. 1000 block.



St. Philip, Ursuline, 800 block.  
Square 79, Bourbon, Dauphine, 1200 block.

**Box 15.** Historic American Buildings Survey, Research Material, New Orleans.

Square 84, Dauphine, Burgundy, 1000 block.  
St. Philip, Ursuline, 900 block.  
Square 86, Dauphine, Burgundy, 800 block.  
St. Ann, Dumaine, 900 block.  
Square 87, Dauphine, Burgundy, 700 block.  
Orleans, St. Ann, 900 block.  
Square 89, Dauphine, Burgundy, 600 block.  
Toulouse, St. Peter, 900 block.  
Square 90, Dauphine, Burgundy, 500 block.  
St. Louis, Toulouse, 900 block.  
Square 95, Burgundy, Rampart, 100 block.  
Canal, Iberville, 1000 block.  
Square 96, Burgundy, Rampart, 100 block.  
Iberville, Bienville, 200 block.

**Box 16.** Historic American Buildings Survey, Research Material, New Orleans.

Square 98, Burgundy, Rampart.  
Conti, St. Louis.  
Square 104, Burgundy, Rampart, 900 block.  
Dumaine, St. Philip, 1000 block.  
Square 105, Ursuline, St. Philip, 1000 block.  
Burgundy, Rampart, 1000 block.  
Square 106, Burgundy, Rampart, 1100 block.  
Ursuline, Governor Nicholls, 1000 block.  
Square 123, Saratoga, Franklin, 300 block.  
Bienville, Conti, 1200 block.  
Square 124, Saratoga, Franklin, 200 block.  
Iberville, Bienville, 1200 block.  
Square 129, Franklin, Liberty, 200 block.  
Iberville, Bienville, 1300 block.  
Square 130, Franklin, Liberty, 300 block.  
Bienville, Conti, 1300 block.  
Square 147-148, Magazine, Constance, 1600 block.  
Felicity, Richards, 1000 block.  
Square 155-156, N. Liberty, Marais, 300 block.  
Bienville, Conti, 1400 block.  
Square 159, Magazine, Camp, 1000 block.  
Howard, Poeyfarre, 1100 block.  
Square 160, Marais, Villere, 300 block.  
Bienville, Conti, 1500 block.  
Square 161, Marais, Villere, 400 block.  
Conti, St. Louis, 1500 block.

Square 166, Marais, Camp, 300 block.  
Gravier, Natchez, 500 block.  
Square 168, Magazine, Camp, 200 block.  
Common, Gravier, 200 block.

**Box 17.** Historic American Buildings Survey, Research Material, New Orleans.

Square 170, Canal, Common, 600 block.  
Camp, St. Charles, 100 block.  
Square 174, Camp, St. Charles, 500 block.  
Poydras, North, 600 block.  
Square 177, Camp, Church, 700 block.  
South, Girod, 600 block.  
Square 185, Conti, Bienville, 1500 block.  
Villere, Robertson, 300 block.  
Square 218, St. Charles, Carondelet, 700 block.  
Girod, Julia, 800 block.  
Square 220, City Hall, Carondelet, 600 block.  
Lafayette, Poydras, 700 block.  
Square 225, Canal, Common, 700 block.  
St. Charles, Carondelet, 100 block.  
Square 226, Baronne, Carondelet, 100 block.  
Canal, Common, 100 block.  
Square 278, Canal, Common, 800 block.  
Square 300, Rampart, Saratoga, 100 block.  
Fourth District miscellaneous, including area of St. Thomas housing project.

**Box 18.** Historic American Buildings Survey. Duplicate surveys.

Amacon Major, New Roads, LA.  
Austerlitz, Oscar, LA.  
Becnel House, St. Gabriel, LA.  
Belle Grove, White Castle, LA.  
Bizet House, New Roads LA.  
Castillion House, Decatur and St. Peter Streets, New Orleans, LA  
Conrad, Conrad Pointe, LA.  
Convent of the Sacred Heart, Grand Coteau, LA.  
DeBaillion House, Ville Platte, LA.  
Delord Sarpy House, 534 Howard Avenue, New Orleans, LA.  
Gally House, 536 Chartres Street, New Orleans, LA.  
General Plauche's House, Natchitoches, LA.  
Germania, Hohen Solms, LA.  
The Hermitage, Darrow, LA.  
Hirst Cabin, New Roads, LA.

**Box 19.** Historic American Buildings. Duplicate surveys.

Labatut House, Brooks, LA.  
Le Jeune, New Roads, LA.

Le Veau, New Roads, LA.  
Madewood, Napoleonville, LA.  
Magnolia Mound, Baton Rouge, LA.  
Means House, Gloster, LA.  
Mt. Airy, St. James Parish, LA.  
Palmasino Cottage, Kenner, LA.  
Peychaud House, 727 Toulouse Street, New Orleans, LA.  
Pleasant View Farms, Hewer, LA.  
Rienzi, Thibodeaux, LA.  
St. Denis, Major, LA.  
St. Louis Hotel, Royal and St. Louis Streets, New Orleans, LA.  
Stonewall, Wilbert, LA.

**Box 20.** Historic American Buildings, miscellaneous material.

Inventory of buildings belonging to French government in New Orleans, July 25<sup>th</sup>, 1767.  
Handwritten transcription of French documents.  
Notebooks.

**Box 21.** Historic American Buildings Survey.

Instructions for district officers, 1930s.

**Box 22.** Historic American Buildings Survey.

Folder 1. Historic American Buildings Survey. Building Lists. 1934-41  
Folder 2. Richard Koch, Employment with Historic American Buildings Survey. 1934-36.  
Folder 3. Historic American Buildings Survey, Proposals and Reports. 1939-41.  
Folder 4. Historic American Buildings Survey, Inventories of Supplies and Field Notebooks. 1937.  
Folder 5. Historic American Buildings Survey, Reference Resources: List of New Orleans Notaries, Early New Orleans Architects, Core Bibliography. 1934.  
Folder 6. Historic American Buildings Survey. Permission Forms. 1934-36.  
Folder 7. Historic American Buildings Survey. Mississippi Resources. 1940.  
Folder 8. Alice L. Felton, Photographs Division, Metropolitan Museum of Art, New York. Correspondence. 1932.

**Box 23.** Historic American Buildings Survey.

Folder 1. Historic American Buildings Survey. Correspondence. 1934-37.  
Folder 2. Historic American Buildings Survey. Correspondence. 1939-40.  
(See also: Box 6)  
Folder 3. Historic American Buildings Survey. Charles E. Peterson, Senior Landscape Architect, U.S. Department of the Interior. Correspondence. 1940-41.  
Folder 4. Historic American Buildings Survey. Publicity Files.  
Folder 5. Historic American Buildings Survey. Final Report. Suspension of Project. 1941.  
Folder 6. Historic American Buildings Survey. La Garconniere (Barbarra Plantation).

- Research notes. 1934-36.
- Folder 7. Historic American Buildings Survey. Frank's Island Lighthouse. North-East Pass. Plaquemines Parish, LA. Research notes. 1934. With sketch.
- Folder 8. Historic American Buildings Survey. Clinton Courthouse. East Feliciana Parish, LA. Research notes. 1936.
- Folder 9. Historic American Buildings Survey. Lawyers' Row, Clinton, East Feliciana Parish LA. Permissions. 1934.
- Folder 10. Historic American Buildings Survey. Angelina Plantation, St. John the Baptist Parish, LA. Research notes and permissions. 1934.
- Folder 11. Historic American Buildings Survey. Central Congregational Church, South Liberty Street and Cleveland Avenue (demolished), New Orleans, LA. Research notes. 1936.
- Folder 12. Historic American Buildings Survey. Lemee House, Natchitoches, LA. 1940. Includes floor plan by Adolph Felder, Central Unit, St. Louis.

**Box 24.** (folio case, Range 22).

Richard Koch Atelier Bernier student drawings. Undated. 22 sheets.

**Folder 1 of 1.** (Project drawings of Richard Koch's father, Julius Koch. Also, plans of the Koch family home at 2627 Coliseum Street, architect unidentified).

Roman Catholic Church to be built in New Orleans, LA. Undated. Julius Koch, architect. 1 sheet.

Perdido between Penn and Dryades Streets, New Orleans, LA. Two-story commercial building. Undated. Julius Koch, architect. 3 sheets.

Perdido and Penn Streets, New Orleans, LA. Bacas, P.A. Warehouse. Undated. Julius Koch, architect. 4 sheets.

Coliseum Street, 2627, New Orleans, LA. Koch, Julius, residence. Undated; 1911. Architect unidentified. 4 sheets.