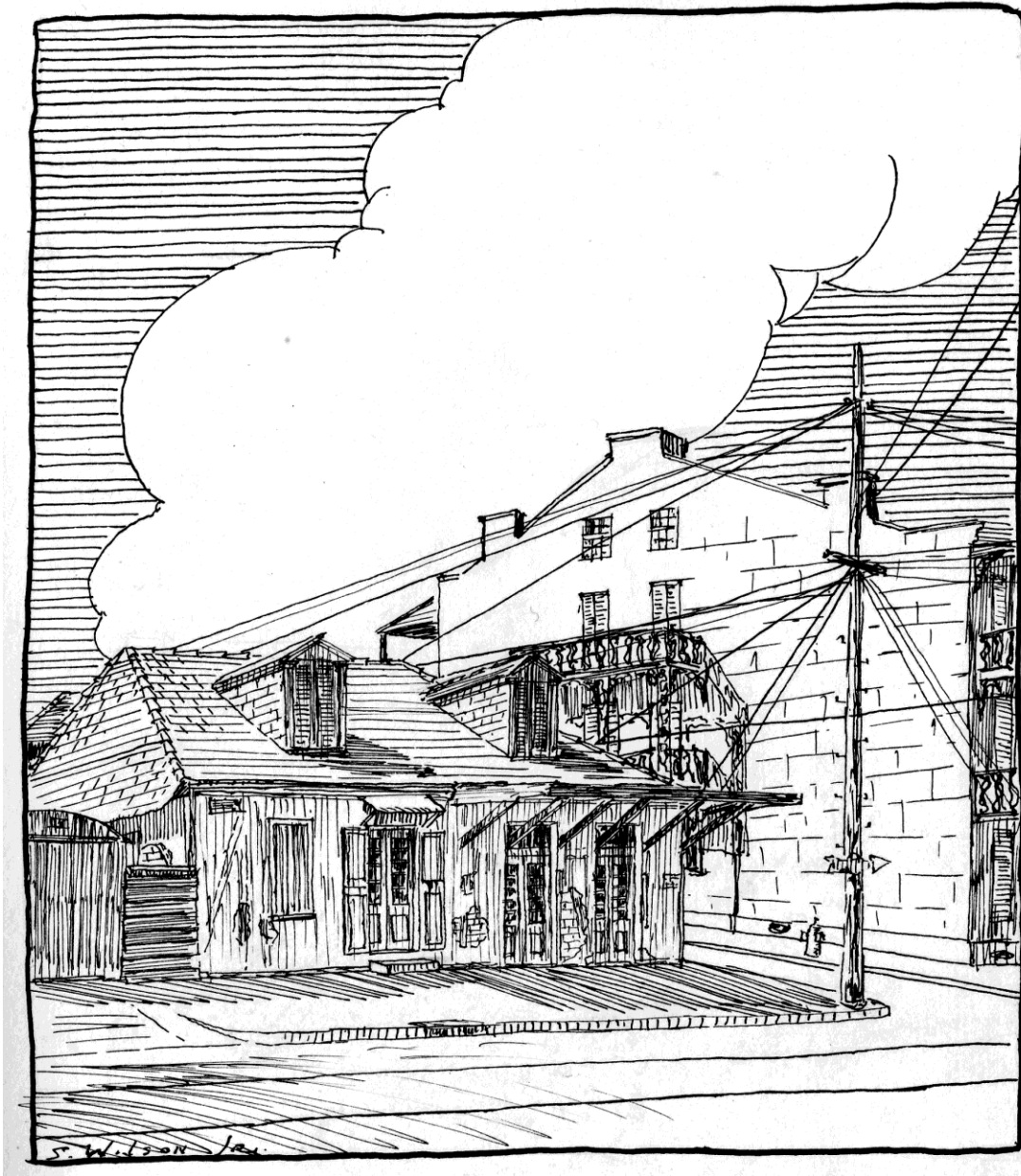


# Samuel Wilson, Jr. Papers

## SOUTHEASTERN ARCHITECTURAL ARCHIVE COLLECTION 2



Samuel Wilson, Jr. Sketch of Lafitte's Blacksmith Shop, Bourbon Street, New Orleans.  
Page from a sketchbook titled Old Houses of New Orleans, which won the Frank G. Churchill Prize, 1930.  
Pen and ink on heavy paper.

## **SCOPE and CONTENTS**

Correspondence, typescripts, photographs, etc.

Ca. 1938 – 1975

49 boxes; one flat file drawer

Papers of New Orleans architect and architectural historian, Samuel Wilson, Jr. (1911-1993). Papers include personal correspondence, typescripts of Wilson articles and lectures, and drawings. Drawings include designs for buildings, restoration projects, and sketches and measured drawings of demolished historic Louisiana buildings, including the Delord Sarpy house and Alexandre Baure house, both in New Orleans.

Samuel Wilson, Jr. was born in New Orleans to Stella Poupenny and Samuel Wilson, Sr. After graduating from Warren Easton High School at the age of 16, he entered the Tulane School of Architecture in 1927. He started working for New Orleans architect Moise Goldstein, while a student at Tulane, and went on to a full time position with his firm after graduating in 1931.

In 1934, Wilson went to work for the Historic American Buildings Survey (HABS) under the direction of New Orleans architect Richard Koch, who was the district HABS officer for Louisiana. In 1935, Wilson was hired by Koch as an architect in his firm. In 1938, the American Institute of Architects awarded Wilson the Edward Langley Scholarship, which allowed him to travel to Europe, spending time in Germany, Britain, and Scandinavian countries. He spent much time in France, where he did research at the French National Archives on the history of colonial Louisiana architecture. Wilson served in the United States Coast Guard during World War II, and served as a skipper in the Sea Scouts (Sea Scout scrapbooks are in the Louisiana Research Collection's Samuel Wilson, Jr. Collection). In 1945, Wilson returned to work in Richard Koch's office, and began teaching a Louisiana architecture course at Tulane University, which he taught for 38 years. Wilson had a lifelong interest in architect Benjamin Henry Latrobe, and edited *Impressions Respecting New Orleans by Benjamin Henry Boneval Latrobe* in 1951. While in Baltimore, researching Latrobe, he met Ellen Elizabeth Latrobe, great-great-granddaughter of B.H.B. Latrobe. The two married the same year the Latrobe book was published.

In 1955, Wilson became the partner of Richard Koch, and they established the firm of Richard Koch and Samuel Wilson, Jr., which was later changed to Koch and Wilson, and is still in operation today. In 1955, Wilson was also elected Fellow of the American Institute of Architects. Wilson was active in many architecture and preservation efforts, including being a founding member and first president of the Louisiana Landmarks Society.

## **PROVENANCE**

Samuel Wilson, Jr. gave the first group of papers to Tulane in the 1960s. Additional papers were given in 1981 through the early 1990s.

## ACCESS

This collection is housed in Tulane University Libraries' Southeastern Architectural Archive (SEAA) and requires an advance appointment for use. For further information, call (504) 865-5699, or email [seaa@tulane.edu](mailto:seaa@tulane.edu). The unauthorized use, including, but not limited to, publication of the materials without the prior written permission of the Southeastern Architectural Archive is strictly prohibited. All inquiries regarding permission to publish should be submitted in writing. Please see our [Permission to Publish Guidelines](#).

## PREFERRED CITATION

Samuel Wilson, Jr. Papers, Southeastern Architectural Archive, Special Collections Division, Tulane University Libraries.

## INVENTORY

### Box 1. Correspondence.

- AIA, centennial observance, 1956-1957.
- AIA, centennial exposition, 1957-1959.
- AIA, College of Fellows, 1956-1958.
- AIA, general, 1951-1966.
- AIA, Historic Buildings Committee, 1963-1967.

### Box 2. Correspondence.

- AIA, meeting, 1952-1955.
- AIA, Historic Buildings Preservation Committee, 1960-1965.
- AIA, State Preservation Coordinator, 1967-1969.
- American Legion, 1955-1957.

### Box 3. Correspondence.

- Architectural Archives Committee, 1956-1962.
- Amon Carter Museum of Art, 1963.
- Apprentice Training Program, 1949-1951.
- Architects Home Plan Bureau, 1946.
- Boy Scouts of America, 1961-1969.
- Catholic Historical Review, 1967-1968.
- Civil Defense, 1952-1953.

Box 4. Correspondence.

Columbia University Press 1961-1968.  
AIA, Committee on the Architectural Museum, 1957-1960.  
Cultural Attractions Fund, 1962.  
Garden District Association, 1954-1967.  
Gargoyle Collection, 1949.  
Governmental Research Bureau, 1963-1969.  
Gulf States Regional Council, 1952-1957.  
HABS Summer Project, 1963.  
Tulane University, instructor. 1946-1962.  
Louisiana Landmarks Society, 1961-1965.  
Miscellaneous correspondence, 1959.

Box 5. Correspondence.

Miscellaneous correspondence, 1959.  
Miscellaneous correspondence, 1960.  
Miscellaneous correspondence, 1961.  
Miscellaneous correspondence, 1962-1963.

Box 6. Correspondence.

Miscellaneous correspondence, 1964-1966.  
Miscellaneous correspondence, 1967.  
Museum of Science and Industry, New Orleans, 1962-1963.  
Natchitoches restorations, 1959.

Box 7. Correspondence.

National Archives, 1949-1964.  
AIA, New Orleans Chapter, 1951-1958.  
AIA, New Orleans Chapter, 1959-1966.  
Mobile, Alabama, Old Spanish Fort, 1955.  
Paris trip, 1938-1940.  
Peterson, Charles, 1962-1967.  
Reed, Henry Hope, 1956-1958.  
Regional Planning Commission.  
Rushton lecture, 1965-1968.

Box 8. Correspondence.

St. Louis Cathedral altar, 1966.  
Site and Markers Committee, 1961-1962.  
Society of Architectural Historians, 1951-1966.  
Society of Architectural Historians, New Orleans tour, 1966-1967.  
Society of Architectural Historians, New Orleans, 1973-1974.  
Metairie Cemetery.  
Talks, 1961-1965.  
Texas symposium, 1967.

## Tour Guide Training Program

### Box 9. Correspondence.

New York talk, 1968.  
Television show, WYES.  
Vieux Carre Property Owners Association.  
Vieux Carre Survey.  
AIA Committee on Historic Resources.  
Miscellaneous correspondence, 1977-1978.  
AIA, miscellaneous correspondence.  
AIA, New Orleans, 1962-1976.

### Box 10. Correspondence.

Columbia University lecture, 1967.  
Expressway, New Orleans, 1960s.  
French symposium, Lafayette, LA.  
James Gallier autobiography.  
Boggs, Hale and Lindy.  
Historic Resources Committee.  
Hosmer, Charles, interview.  
Jackson Square Advisory Committee.  
Louisiana Historical Preservation and Cultural Commission.  
Louisiana Medallion Society.  
Louisiana State University Press.

### Box 11. Correspondence.

*Frenchmen and French Ways in the Mississippi Valley*-McDermott.  
Almonester article-McDermott.  
AIA, Committee on Historic Buildings.  
Mississippi conference on historic preservation.  
Mobile Planning Commission.  
University of South Alabama, consultation.  
Montgomery, AL, Historical Development Committee.  
National Park Service.  
National Trust for Historic Preservation.  
New Orleans housing and neighborhood preservation study.  
New Orleans, 250<sup>th</sup> anniversary.

### Box 12. Correspondence.

Nominations.  
Octagon application.  
Orleans Parish School Board.  
Historic Pensacola.  
Miscellaneous correspondence, 1968.  
Miscellaneous correspondence, 1969.

Miscellaneous correspondence, 1970.  
Miscellaneous correspondence, 1971.  
Miscellaneous correspondence, 1972.

Box 13. Correspondence.

Peterson, Charles.  
Florida Historical Quarterly.  
Wilson, Jr., Samuel, publications.  
Puerto Rico trip, 1974.  
*Shreveport Times*.  
Association of Preservation Technology.  
Shaw House.  
Southern Assembly.  
*Town and Country Magazine*, article.  
Tulane University class.  
Walpole Society.  
University of Florida article, 1972.  
Winterthur article, 1970.

Box 14. Correspondence.

AIA, New Orleans meeting, 1983.  
Gallier exhibit, 1950.  
AIA, miscellaneous, 1972-1982.  
Board of Trade.  
New Orleans Book Collectors Club.  
Boston Club.  
Boy Scouts Executive Board.  
St. Mary's Dominican College.  
Friends of the Anglo-American Art Museum.  
Friends of the Archives of Louisiana.  
Friends of the Cabildo.  
Friends of Cast Iron Architecture.  
Friends of the Tulane Library.  
Garden District Association.

Box 15. Correspondence.

HABS, bibliography, 1989.  
HABS 50<sup>th</sup> anniversary.  
HABS Emergency Committee.  
HABS, miscellaneous.  
Christian Women's Exchange.  
Historic Natchez Foundation.  
Jefferson Parish Historical Society.  
Keyes Foundation.  
Louisiana Architects Association.

Louisiana Historical Association, Local Arrangements Committee, 1987.  
Louisiana Historical Association, Memorial Hall Foundation.  
Louisiana Historical Association, 1986-1987.

Box 16. Correspondence.

Louisiana Historical Association, 1981-1985.  
Louisiana Historical Association, Roots in France trip, 1984.  
Louisiana Historical Landmarks Society, Torre Fund.  
Louisiana Museum Foundation.  
Louisiana Preservation Alliance.  
Louisiana Public Broadcasting, Louisiana Churches program  
Louisiana State University, Department of Geography.  
Louisiana Council for Music and Performing Arts, Inc.  
Louisiana Historical Society, 1970-1981.  
Maison Hospitalier Board.  
B.H.B. Latrobe gravesite marker.

Box 17. Correspondence.

Miscellaneous correspondence, 1970-1980.

Box 18. Correspondence.

Miscellaneous correspondence, 1981-1983.  
Musicana Shrine.  
Natchez, Pilgrimage Garden Club, 1974.  
Natchez, Society of Architectural Historians tour, 1982.

Box 19. Correspondence.

National Park Service-Landmarks.  
National Trust.  
New Orleans history film, 1983.  
New Orleans Public Library.  
Rice University Design Alliance.  
Save Historic Charleston Fund.  
Preservation Resource Center, Advisory Council.  
St. Louis Cemetery II, Restoration Committee.  
St. Patrick's Church, 150<sup>th</sup> Anniversary.  
AIA, Design Conference, Natchez.  
Talks and tours, 1979-1981.  
Talks at Karr Junior High School.  
Tulane Alumni Fund.  
Tulane Architecture, class of 1931.  
Tulane, Louisiana architecture course, final year, 1983.

Box 20. Correspondence.

Annapolis Roundtable Conference, 1960.

AIA Committee on Preservation, 1950s.  
New Orleans Council, Boy Scouts of America, and Sea Scouts, 1940s-1950s.  
AIA correspondence.  
Samuel Wilson, Jr. bibliographies.  
Detroit Institute of Arts.  
AIA, Guide Book, Conservation in New Orleans, 1959.

Box 21. Correspondence.

AIA, Preservation Committee, 1950s.  
Latrobe's New Orleans Impressions.  
Henry Krotzer, Pontalba information.  
Street Markers Committee.  
Lower Pontalba building.  
AIA, Committee on Preservation of Historic Buildings.

Box 22. Correspondence.

Louisiana Landmarks Society, Sesquicentennial Committee.  
Samuel Wilson, Jr. 80<sup>th</sup> birthday.  
Samuel Wilson, Jr. lectures.  
Gregory, Angela.  
Hall, Weeks.  
Miscellaneous correspondence, 1940s.  
Miscellaneous correspondence, 1950s.

Box 23. Correspondence.

Miscellaneous correspondence, 1950s.  
Louisiana Landmarks Society, 1950s.  
Louisiana State Museum Board, 1950s.

Box 24. Research notes.

Architecture in Louisiana.  
Arkansas Post.  
Armant plantation.  
Ascension Parish.  
Bailey, Francis.  
Battlefield plantation, Chalmette.  
Belle Grove plantation.  
Bienvenu plantation.  
Bicknel, Hamblet, and Fox.  
Bourbon Street, 234.  
Bourbon Street, 409.

Box 25. Research notes.

Bourbon Street, 300.  
Bourbon Street, 941.



Bourbon Street, miscellaneous.  
Le Bouteux, J.B.M.  
Boutte, Hilaire.  
Broutin, Ignace Francois.  
Buisson, Benjamin.  
Chartres Street, 801-807.  
Lacoste plantation.  
Lafourche plantation.  
Lassus brothers.  
Le Blond de Latour.

Box 26. Research notes.

Leper hospital.  
Le Riche, Antoine.  
Lion, J.  
Macarty plantation.  
De Morand, Charles.  
Mulligan brothers.  
Nichols, William.  
Nolte, Vincent.  
Orleans Cotton Press.  
Orphan Boys Asylum.  
Le Prevost.  
Pontalba family notes.

Box 27. Research notes.

Reynolds, L.E.  
St. Bernard Parish.  
St. Domingue.  
St. Mary's Assumption, New Orleans.  
Saucier, Francois.  
Spanish records, translations.  
Sugar mills.  
Thiorny, plan of New Orleans.  
Trudeau, Carlos.  
Turpin, John.  
Colonial New Orleans, Government House.  
Mobile, Spanish Fort.  
Jewish structures.  
Almonester.

Box 28. Research notes.

Colonial barracks.  
Guillemard, Gilbert.  
Latrobe, J.H.B.

Claiborne family.  
Dauphine Street, miscellaneous.  
Paris Archives, plans.  
Paris Archives, translations.  
Farming.  
De Pouilly.

Box 29 – Box 31. Ellen Latrobe Wilson correspondence.

Box 32. Correspondence.  
Miscellaneous personal correspondence, 1942-1943, including Sea Scouts.

Box 33. Correspondence.  
Miscellaneous personal correspondence, 1944-1951, including Sea Scouts.

Box 34. Photographs.  
Professional.  
Tulane University.  
Lady Bird Johnson's New Orleans tour.  
Patricia Nixon's New Orleans tour.  
Samuel Wilson, Jr.  
Ellen and Samuel Wilson, Jr.  
Family photographs.  
Mardi Gras.  
Samuel Wilson, Jr. publicity.

Box 35. Photographs.  
Europe.  
Europe, 1930s.  
Family trips.  
Scandinavia and Canada.

Box 36. Awards and diplomas.

Box 37. Latrobe research material.

Box 38. Latrobe research material, Latrobe talk script.

Box 39. Latrobe book manuscripts.

Box 40. Paris Archives translations.

Box 41. Paris Archives translations.

Box 42. Paris Archives translations.

Box 43. Miscellaneous articles by Sam Wilson, Jr.  
Parish Archives translations.

Box 44. *A Guide to Architecture of New Orleans* manuscript.  
*French Colonial Natchez* manuscript.

Box 45. Talks, 1966-1976.  
Talks 1977-1978.  
WYES scripts for New Orleans architecture series.  
Paper on B.H.B. Latrobe.  
Cabildo manuscript.

Box 46. Broutin manuscript.  
De La Ronde Plantation paper.  
Fort Rosalie paper.  
Merieult house paper.  
Early New Orleans talk.  
Religious Architecture in Colonial Louisiana paper.  
Almonester paper.  
Gulf Coast Architecture talk.  
Faubourg St. Mary paper.  
Plantation Houses of the Battlefield of New Orleans paper.  
B.H.B. Latrobe talk.  
Delord-Sarpy House paper.  
Talk to Friends of Howard-Tilton Library, 1952.  
Report on the Home for Incurables.

Box 47. The Vieux Carre of New Orleans paper.

Box 48. Student sketches by Samuel Wilson, Jr., 1930, awarded the Frank  
G. Churchill Prize.  
Loose pencil and watercolor sketches, 1938; undated.  
Journal of Samuel Wilson, Jr., 1938, of European trip, includes photos.

Box 49. Small matted drawings. (In museum case range).

#### FLAT FILES

Over-sized drawings not inventoried.