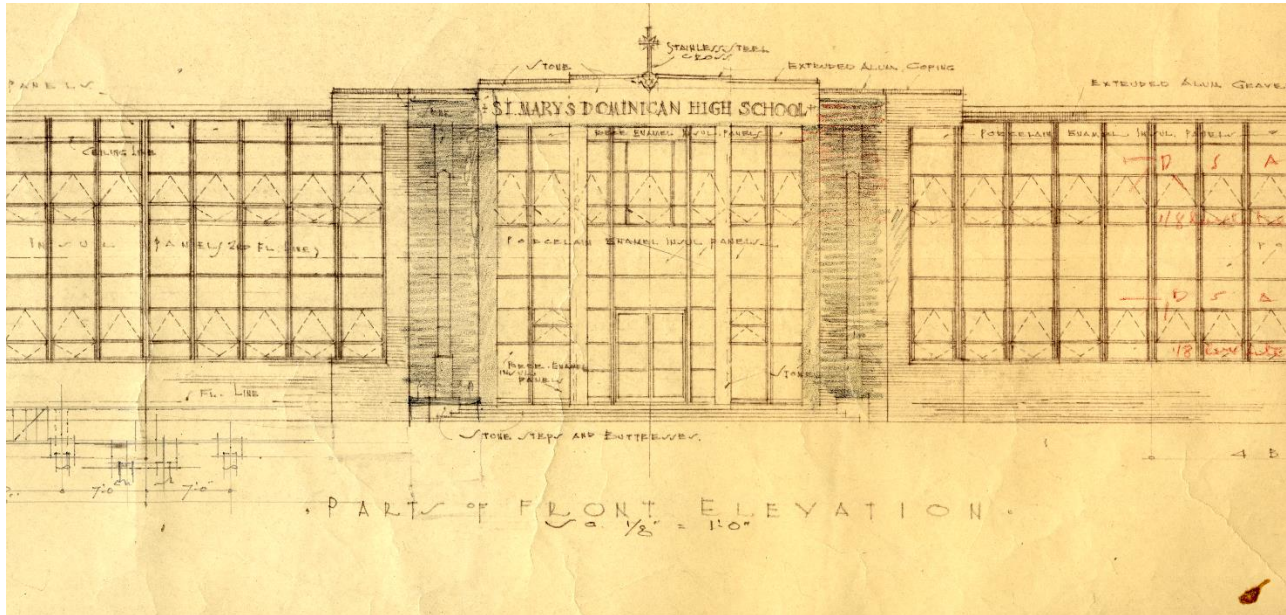


Philip P. Cazale Office Records

SOUTHEASTERN ARCHITECTURAL ARCHIVE COLLECTION 178



Walmsley Avenue, New Orleans, LA. St. Mary's Dominican High School. 1959. Philip P. Cazale, architect.
Blueline print.

SCOPE and CONTENTS

Project drawings
1930 – 1961
22 rolls

Project drawings (mostly copy prints) from the office of New Orleans architect Philip Peter Cazale (1892-1975). Also included are drawings from his collaborations with Albert Bendernagel, Sr. and Robert W. Layer. Cazale was architect of many New Orleans Catholic churches and schools, and did alterations to the Falstaff Brewery in New Orleans. Also included are drawings for St. Joseph's Church and Sanctuary in St. Benedict, Louisiana by architect Theodore Brune.

PROVENANCE

Records were given to SEAA by the estate of Philip P. Cazale in 2009.

ACCESS

This collection is housed in Tulane University Libraries' Southeastern Architectural Archive (SEAA) and requires an advance appointment for use. For further information, call (504) 865-5699, or email seaa@tulane.edu. The unauthorized use, including, but not limited to, publication of the materials without the prior written permission of the Southeastern Architectural Archive is strictly prohibited. All inquiries regarding permission to publish should be submitted in writing. Please see our [Permission to Publish Guidelines](#).

PREFERRED CITATION

Philip P. Cazale Office Records, Southeastern Architectural Archive, Special Collections Division, Tulane University Libraries.

INVENTORY

Project Drawings.

Organized by roll number.

1. Gravier Street, 2600, New Orleans, LA. Falstaff Brewing Corporation. Alterations and additions, Plant Number 4. 1945. Philip P. Cazale and Robert W. Layer, architects. 32 sheets.
2. Gravier Street, 2600, New Orleans, LA. Falstaff Brewing Corporation. Alterations and additions, Plant Number 4. 1950. Philip P. Cazale and Robert W. Layer, architects. Irving E. Brooke and Peter N. Choporis, engineers. 9 sheets.
3. Pine Street, 2630, New Orleans, LA. St. Rita Roman Catholic Church. 1952-53. Albert Bendernagel and Philip P. Cazale, architects. 14 sheets.
4. Pine Street, 2630, New Orleans, LA. St. Rita Roman Catholic Church. 1952. Albert Bendernagel and Philip P. Cazale, architects. 32 sheets.
5. Magnolia, LA. Parochial School building, St. Jude Roman Catholic Church. 1958. Philip P. Cazale, architect. 45 sheets, 5 on tracing paper.
6. Lafayette, LA. Buildings, Minor Seminary. 1946-47. Bendernagel, Cazale, and Bendernagel, architects. 62 sheets.

7. Walmsley Avenue, New Orleans, LA. St. Mary's Dominican High School. 1959. Philip P. Cazale, architect. 29 sheets, 2 on tracing paper.
8. Magnolia, LA. St. Jude Roman Catholic Church. 1954. Philip P. Cazale, architect. 15 sheets.
9. St. Benedict, LA. Church of St. Joseph's, Church and Sanctuary. 1930. Theodore Brune, architect. 15 sheets.
10. Baton Rouge, LA. The Greater Sacred Heart Church. 1941. Albert Bendernagel and Philip E. Cazale, architects. 58 sheets.
11. Walmsley Avenue, New Orleans, LA. 1961. Philip P. Cazale, architect. 108 sheets.
12. Pine Street, 2630, New Orleans, LA. St. Rita's Roman Catholic Church. 1952. Albert Bendernagel and Philip P. Cazale, architects. Cary M. Gamble and Associates and Caclede Steel Company, consultants. 48 sheets.
13. Gravier Street, 2600, New Orleans, LA. Falstaff Brewing Corporation, additions and alterations to Plant Number 4. 1950. Robert W. Layer and Philip P. Cazale, architects. 16 sheets.
14. Gravier Street, 2600, New Orleans, LA. Falstaff Brewing Corporation, additions and alterations to Plant Number 4. 1950. Robert W. Layer and Philip P. Cazale, architects. Irving Brooke and Peter Choporis, consultants. 9 sheets.
15. Gravier Street, 2600, New Orleans, LA. Falstaff Brewing Corporation, additions and alterations to Plant Number 4. 1950. Robert W. Layer and Philip P. Cazale, architects. 23 sheets.
16. Gravier Street, 2600, New Orleans, LA. Falstaff Brewing Corporation, additions and alterations to Plant Number 4. 1950. Robert W. Layer and Philip P. Cazale, architects. Irving Brooke and Peter Choporis, consultants. 7 sheets.
17. Gravier Street, 2600, New Orleans, LA. Falstaff Brewing Corporation, additions and alterations to Plant Number 4. 1950. Robert W. Layer and Philip P. Cazale, architects. The Ingalls Ironwork Company, consultants. 100 sheets.
18. Gravier Street, 2600, New Orleans, LA. Falstaff Brewing Corporation, additions and alterations to Plant Number 4. 1945. Robert W. Layer and Philip P. Cazale, architects. 10 sheets.
19. Gravier Street, 2600, New Orleans, LA. Falstaff Brewing Corporation, additions and alterations to Plant Number 4. 1946. Robert W. Layer and Philip P. Cazale, architects. Stupp Brothers Bridge and Iron Company, consultants. 100 sheets.

20. Gravier Street, 2600, New Orleans, LA. Falstaff Brewing Corporation, additions and alterations to Plant Number 4. 1946. Robert W. Layer and Philip P. Cazale, architects. Stupp Brothers Bridge and Iron Company, consultants. 137 sheets.
21. Pine Street, 2630, New Orleans, LA. St. Rita's Roman Catholic Church. 1952. Albert Bendernagel and Philip P. Cazale, architects. Silveys Art Craft Iron Company, consultants. 80 sheets, 3 on tracing paper.
22. Roman Catholic Congregation Sacred Heart of Jesus, school building, alterations. 1949. Bendernagel and Cazale, architects. 14 sheets.