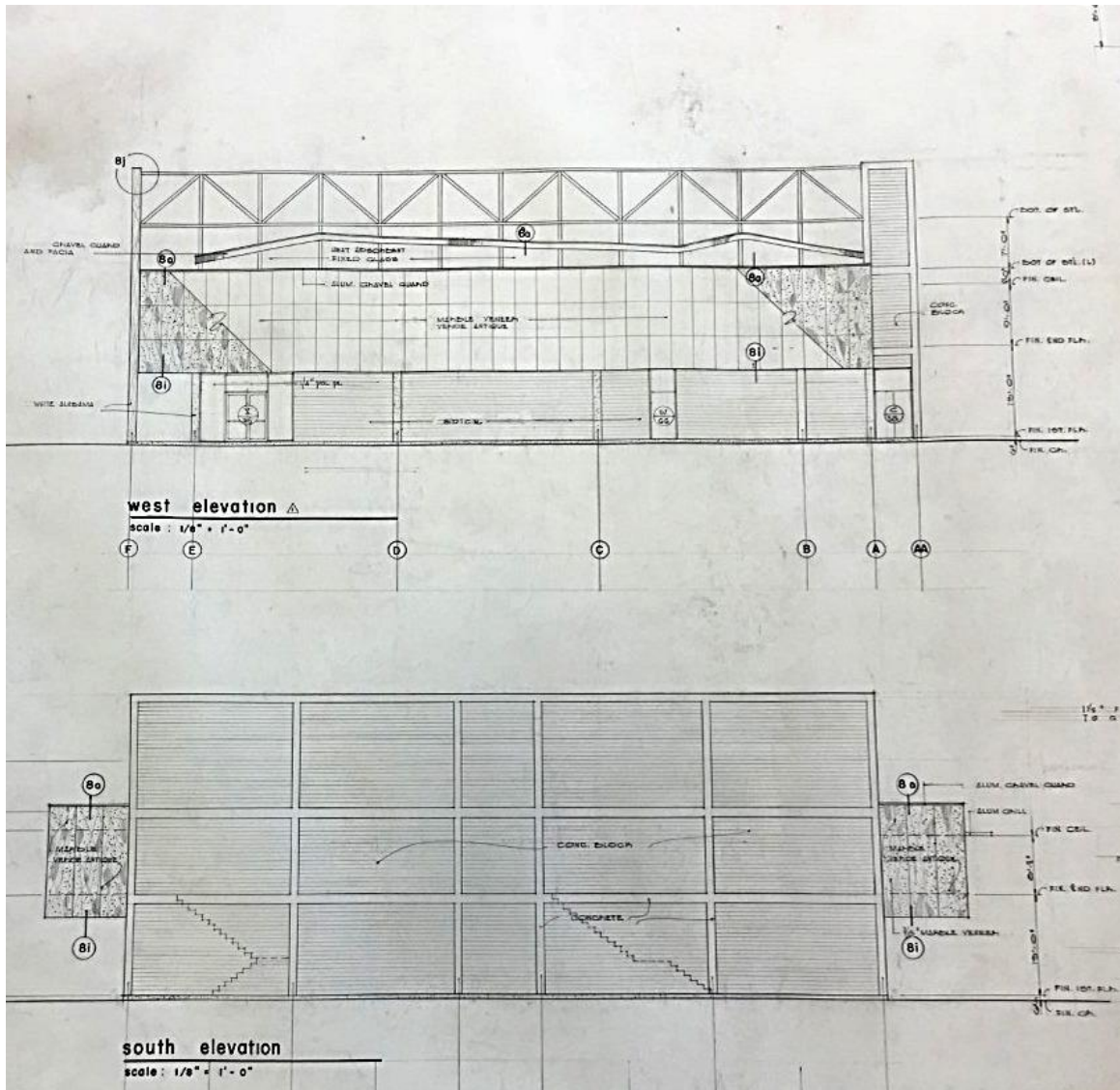


# George A. Saunders Office Records

## SOUTHEASTERN ARCHITECTURAL ARCHIVE COLLECTION 172



General Longshore Workers, Local 1419, 2700 South Claiborne Avenue, New Orleans, LA. 1957.  
Lawrence and Saunders, architects. Pencil and ink on tracing paper.

## **SCOPE and CONTENTS**

Project drawings  
1950s – 1980s  
15 tube boxes

Office records of New Orleans architect George A. Saunders (1920-2006), and records from his collaboration with John W. Lawrence (1923-1971) and William Calongne (Lawrence and Saunders; Lawrence, Saunders, and Calongne). Records consist of project drawings from Lawrence and Saunders, dating from the late-1950s through the 1960s, and project drawings for work done under his own name (George A. Saunders; George A. Saunders and Associates), dating through the 1980s.

## **PROVENANCE**

Records were given by George A. Saunders to Tulane in 2000.

## **ACCESS**

This collection is housed in Tulane University Libraries' Southeastern Architectural Archive (SEAA) and requires an advance appointment for use. For further information, call (504) 865-5699, or email [seaa@tulane.edu](mailto:seaa@tulane.edu). The unauthorized use, including, but not limited to, publication of the materials without the prior written permission of the Southeastern Architectural Archive is strictly prohibited. All inquiries regarding permission to publish should be submitted in writing. Please see our [Permission to Publish Guidelines](#).

## **PREFERRED CITATION**

George A. Saunders Office Records, Southeastern Architectural Archive, Special Collections Division, Tulane University Libraries.

# INVENTORY

## Project Drawings.

### Box 1.

Channell Shopping Center, Hammond, LA. George A. Saunders, architect. 1964; 1965. Pencil and pen on tracing paper. 32 sheets.

Harahan, LA. 6500 Jefferson Highway, St. Paul's Methodist Church. Lawrence and Saunders, architects. 1961. Pencil and pen on tracing paper. 25 sheets.

St. Joseph Abbey, Abbey Retreat House, St. Benedict, LA. Lawrence and Saunders, architects. 1964; 1965. Pencil and pen on tracing paper. 32 sheets.

### Box 2.

Caffin Avenue, 627. Christ Evangelical Lutheran Church, New Orleans, LA. Lawrence and Saunders, architects. 1960. Pencil and pen on tracing paper. 20 sheets.

St. Lawrence the Martyr, Sisters' Residence and Priests' Residence, Westgate Subdivision, Kenner, LA. Lawrence and Saunders, architects. 1966. Pencil and pen on tracing paper. 14 sheets.

St. Matthew's Methodist Church, Additions, Metairie, LA. Lawrence and Saunders, architects. 1959. Pencil and ink on tracing paper. 35 sheets.

South Claiborne Avenue, 2700. General Longshore Workers, Local 1419, New Orleans, LA. Lawrence and Saunders, architects. 1957. Pencil and ink on tracing paper. 25 sheets.

### Box 3.

Colony Road, Green Acres, William T. Newsom Residence, Metairie, LA. Lawrence and Saunders, architects. 1959. Pencil and ink on tracing paper. 16 sheets.

Luling Methodist Church, Luling, LA. Lawrence and Saunders, architects. 1961. Pencil and ink on tracing paper. 6 sheets.

Mossy, Wiley L., Residence, St. Benedict, LA. Lawrence and Saunders, architects. 1960; 1961. Pencil and ink on tracing paper. 15 sheets.

Mulberry Drive, Philip M. Tiller, Jr. Residence, New Orleans, LA. Lawrence, Saunders and Calongne, architects. 1955. Pencil and ink on tracing paper. 13 sheets.

St. Andrew's Lutheran Church, St. Bernard Ave., New Orleans, LA. Lawrence and Saunders, architects. 1964. Pencil and ink on tracing paper. 23 sheets.

St. Bernard Methodist Church, Paris Road, Chalmette, LA. Dinwiddie, Lawrence and Saunders, architects. 1954. Pencil and ink on tracing paper. 6 sheets.

St. Matthew's Methodist Church, Youth Center, Airline Park, Metairie, LA. Lawrence and Saunders, architects. 1963. Pencil and ink on tracing paper. 8 sheets.

### Box 4.

Greenlawn Terrace Elementary School (Phase 2), 38<sup>th</sup> Street, Kenner, LA. Lawrence and Saunders, architects. 1965. Pencil and ink on tracing paper. 27 sheets.  
Metairie Methodist Church, Pontiac Street, Metairie, LA. Lawrence, Saunders, and Calongne, architects. 1957. Pencil and ink on tracing paper. 8 sheets.  
St. Lawrence the Martyr, School Addition, Westgate Subdivision, Kenner, LA. Lawrence and Saunders, architects. 1962; 1963. Pencil and ink on tracing paper. 28 sheets.

**Box 5.**

Jefferson Parish, LA. 131 Airline Highway. Powell Office Building. George A. Saunders, architect. 1987. Pencil and ink on tracing paper. 2 sheets.  
Marrero, LA. 4041 Chestnut Street, Carport Enclosure. George A. Saunders, architect. 1987. Pencil and ink on tracing paper.  
Continental Cars Distribution, Inc., New Orleans, LA. George A. Saunders and Assoc., architects. Undated. Pencil and ink on tracing paper. 8 sheets.  
Elysian Fields Methodist Church, Fillmore Ave., New Orleans, LA. Lawrence, Saunders and Calongne, architects. 1956. Pencil and ink on tracing paper. 12 sheets.  
Goldman, Jerome, Four-plex Apartment Building, location not given. Lawrence and Saunders, architects. 1971. Pencil and ink on tracing paper. 5 sheets.  
Goldman, Jerome, Residence. Location not given. Lawrence and Saunders, architects. 1969. Pencil and ink on tracing paper. 24 sheets.  
Jefferson Parish, LA. 224 Isis Avenue, Filmore Electric Co., Warehouse. George A. Saunders, architect. 1984.  
St. Joseph Abbey, Alterations, St. Benedict, LA. George A. Saunders, architect. Pencil and ink on tracing paper. 7 sheets.  
St. Pauls Methodist Church, Plank Road, Baton Rouge, LA. Lawrence and Saunders, architects. 1959. Pencil and ink on tracing paper. 12 sheets.  
Thirty-Eighth Street, 325. Vincent Massimime Residence, Addition, New Orleans, LA. George A. Saunders and Assoc., architects. 1984. Pencil and ink on tracing paper. 3 sheets.

**Box 6.**

Belle Terre Library, Belle Terre Road, Jefferson Parish, LA. George A. Saunders, architect. 1979. Pencil and ink on tracing paper. 7 sheets.  
Brother Martin High School, Brothers' Residence, Alterations, New Orleans, LA. George A. Saunders and Assoc., architects. 1983. Pencil and ink on tracing paper. 7 sheets.  
Fisk Electric Co. Office Building, Jefferson Parish, LA. George A. Saunders and Assoc., architects. 1972. Pencil and ink on tracing paper. 6 sheets.  
Henry Ford Junior High School, Addition, Avondale, LA. George A. Saunders and Assoc., architects. 1983. Project No.204-3-057-B. Pencil and ink on tracing paper. 14 sheets.  
Louisiana Avenue, 1520. Mahorner Clinic, Alterations, New Orleans, LA. George A. Saunders, architect. 1979. Pencil and ink on tracing paper; sepia copy prints. 6 sheets.  
Metairie Bank and Trust Co., Branch Office, Veterans Highway, Metairie, LA. George A. Saunders and Assoc., architects. 1972. Pencil and ink on tracing paper. 10 sheets.  
Tchoupitoulas Street, 4600. Lane Industrial Center, New Orleans, LA. George A. Saunders, architect. 1963. Pencil and ink on tracing paper. 1 sheet.

Tchoupitoulas Street, 5100. Laborer's Union Hall, Local 698, New Orleans, LA. George A. Saunders, architect. 1964. Pencil and ink on tracing paper. 5 sheets.

Walnut Street, 473. Audubon Park Golf Club House, Alterations, New Orleans, LA. George A. Saunders, architect. 1961. Pencil and ink on tracing paper. 4 sheets.

**Box 7.**

Napoleon Avenue, 2633. Office for Dr. Dorothy York, New Orleans, LA. George A. Saunders and Assoc., architects. 1979. Pencil and ink on tracing paper. 18 sheets.

Pendleton Memorial Hospital, Alterations, Read Road, New Orleans, LA. George A. Saunders, architect. 1980. Pencil and ink on tracing paper; sepia prints. 6 sheets.

Jackson, LA. War Veterans Home, George A. Saunders and Assoc., architects. 1979. Project No. 09-05-03-75B-3. Pencil and ink on tracing paper; ink on mylar. 33 sheets.

**Box 8.**

Etienne de Bore Elementary School, Village de L'Est, New Orleans, LA. Lawrence and Saunders, architects. 1967. Pencil and ink on tracing paper. 29 sheets.

Jackson Vo-Tech School, Jackson, LA. George A. Saunders and Assoc., architects. 1979. Project No. 19-82-02-73B. Pencil and ink on tracing paper; pen on mylar. 47 sheets.

**Box 9.**

Methodist Hospital, Read Road, New Orleans, LA. Lawrence and Saunders, architects. 1966. Project No. LA-131. Pencil and ink on tracing paper. 60 sheets.

**Box 10.**

Benefit Street, Benson M. Boutte Residence, New Orleans, LA. Lawrence and Saunders, architects. 1959; 1968. Pencil and ink on tracing paper. 17 sheets.

Chalmette Medical and Dental Plaza, Virtue Street, Chalmette, LA. George A. Saunders and Assoc., architects. 1980. Pencil and ink on tracing paper; pen on mylar. 14 sheets.

Gretna, LA. 80 First Street, Warehouse Addition for "Walter International, Phase Two. Lawrence and Saunders, architects. Pencil and ink on tracing paper; ink on mylar. 6 sheets.

General Tires Sales Store, Veterans Highway, Metairie, LA. Lawrence and Saunders, architects. 1967. Pencil and ink on tracing paper. 11 sheets.

Gretna Methodist Church, Anson Street, Gretna, LA. Lawrence, Saunders and Calongne, architects. 1955. Pencil and ink on tracing paper. 8 sheets.

New York Street, Residence, Lake Terrace, New Orleans, LA. Lawrence, Saunders and Calongne, architects. 1955. Project No. 110. Pencil and ink on tracing paper. 6 sheets.

St. Claude Avenue, 3500. Academy of the Holy Angels, New Orleans, LA. Lawrence and Saunders, architects. 1963. Pencil and ink on tracing paper. 12 sheets.

**Box 11.**

Archbishop Blenk High School, Addition, Gretna, LA. Lawrence and Saunders, architects. 1961; 1964. Pencil and ink on tracing paper. 39 sheets.

**Box 12.**

Chalmette General Hospital, Maintenance Building and Lab Revisions, Chalmette, LA. George A. Saunders, architect. 1980; 1981. Pencil and ink on tracing; sepia prints. 8 sheets.  
Our Lady of Lourdes Catholic Church and Rectory, Slidell, LA. Lawrence and Saunders, architects. 1961. Pencil and ink on tracing paper. 34 sheets.

**Box 13.**

Atlanta Hilton Inn/LuLu Belle's Bar, 1031 Virginia Ave., Hapeville, GA. George A. Saunders, architect. 1959. Project No. 60159. Pencil and ink on tracing paper; sepia prints. 39 sheets.

**Box 14.**

International Hotel, Common Street, New Orleans, LA. George A. Saunders, architect. 1971.  
Pencil and ink on tracing paper; pen on mylar. 64 sheets.  
St. Mary's Dominican College, Pope John 23 Library, New Orleans, LA. Lawrence and Saunders, architects. 1965. Pencil and ink on tracing paper; sepia copy prints. 26 sheets.

**Box 15.**

Methodist Hospital, Read Road, New Orleans, LA. Lawrence and Saunders, architects. 1966.  
Project No. LA-131. Pencil and ink on tracing paper. 20 sheets.  
Rebus Realty Company, House, New Orleans, LA. Lawrence and Saunders, architects. 1965.  
Pencil and ink on tracing paper; sepia prints. 33 sheets.