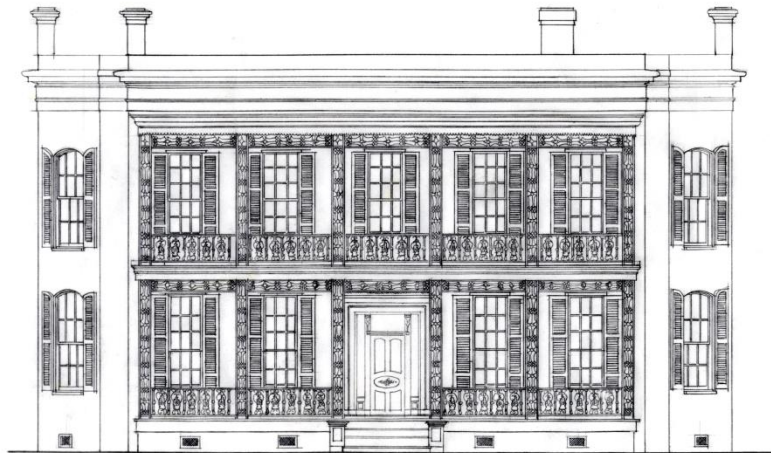


Historic American Buildings Survey Louisiana Division Records

SOUTHEASTERN ARCHITECTURAL ARCHIVE
COLLECTION 13



2027 Carondelet Street, New Orleans, LA. Measured drawings for Leathers House.
Patrick Flory and Susan Wroten, delineators. 1970. Ink on vellum.

SCOPE and CONTENTS

Measured drawings
1930s - 2002
30 folders; 4 volumes

Original and copies of measured drawings of Louisiana plantations and early New Orleans

buildings made for documentation for the Historic American Buildings Survey, Washington, D.C. The earlier drawings from the 1930s are mostly half-sized blue line prints of the originals, which are housed with the official HABS records at the Library of Congress. Much of this work was done under the direction of New Orleans architect, Richard Koch (1889-1971), when he was the Louisiana District Officer for the Historic American Buildings Survey. The later drawings, which include originals and copies, are from the HABS projects done by the Tulane School of Architecture, from the early 1980s to 2001.

PROVENANCE

Copies of early drawings were given by various donors in the mid-1980s. Later drawings were given by Eugene Cizek, director of the Tulane School of Architecture HABS project, in 1987; 1999; and 2007.

ACCESS

This collection is housed in Tulane University Libraries' Southeastern Architectural Archive (SEAA) and requires an advance appointment for use. For further information, call (504) 865-5699, or email seaa@tulane.edu. The unauthorized use, including, but not limited to, publication of the materials without the prior written permission of the Southeastern Architectural Archive is strictly prohibited. All inquiries regarding permission to publish should be submitted in writing. Please see our [Permission to Publish Guidelines](#).

PREFERRED CITATION

Historic American Buildings Survey, Louisiana Division Records, Southeastern Architectural Archive, Special Collections Division, Tulane University Libraries.

INVENTORY

Measured Drawings, Large Format.

- | | |
|-----------|--|
| Folder 1. | Whitney Plantation, St. John the Baptist Parish, LA. 1983. Ink on mylar.
7 sheets. |
| Folder 2. | Crescent Farm Plantation, St. James Parish, LA. 1983. Ink on mylar.
1 sheet.
Robicheaux House, St. James Parish, LA. 1983. Ink on mylar. |

- 4 sheets.
Hymel House, St. James Parish, LA. 1983. Ink on mylar.
10 sheets.
- Folder 3. Glendale Plantation, St. John the Baptist Parish, LA. 1983. Ink on mylar.
11 sheets.
- Folder 4. Graugnard Farms Plantation, St. James Parish, LA. 1983. Ink on mylar.
13 sheets.
- Folder 5. Lombard Manor House, 3933 Chartres, New Orleans, LA. 1983. Ink on
mylar. 16 sheets.
- Folder 6. Glendale Plantation, Edgard, LA. 1983. Ink on mylar.
16 sheets.
- Folder 7. Wartelle Plantation, Washington, LA. 1985. Ink on mylar.
18 sheets.
- Folder 8. Dupre, Jacques House. Opelousas, LA. 1985. Ink on mylar.
10 sheets.
Dupre, Jacques Tomb, Opelousas, LA. 1985. Ink on mylar.
4 sheets.
- Folder 9. Labatut Plantation, New Roads, LA. Ca. 1985. Ink on mylar.
23 sheets.
- Folder 10. Belle Grove Plantation, Iberville Parish, LA. 1938. W.P.A.
Survey No.LA-36. Blueline print. 9 sheets.
Hermitage Plantation, Darrow, LA. Undated. Blueline print.
10 sheets.
Decatur, 2714, Residence, New Orleans, LA. 1952. Ink on tracing
paper; typescript on paper. 13 sheets.
Delorde-Sarpy House, Howard Avenue, New Orleans, LA. Undated
Ink on tracing paper. 8 sheets.
Uncle Sam Plantation, St. James Parish, LA. 1940. W.P.A. Survey
No.LA-74. Used as a convent at time of survey. Blueprints.
17 sheets.
Leathers House, 2027 Carondelet, New Orleans, LA. 1970. Pencil on
tracing paper. 5 sheets.
- Folder 11. Columbia Plantation, Edgard, LA. 1983. Ink on mylar.
13 sheets.
- Folder 12. Kroll Plantation, Edgard, LA. 1983. Ink on mylar.
9 sheets.
- Folder 13. Montegut Plantation, St. John the Baptist Parish, LA. 1986. Ink on
mylar. 9 sheets.
- Folder 14. Live Oak Plantation, Opelousas, LA. 1986. Ink on mylar; pencil on
tracing paper. 41 sheets.
- Folder 15. Pitot House, Bayou Road, New Orleans, LA. 1992. Ink on mylar.
10 sheets.
- Folder 16. Oakland Plantation, Natchitoches Parish, LA. 1987. Ink on mylar.
74 sheets.
- Folder 17. Mary Plantation, Plaquemines Parish, LA. 1995. Xerox copies.
40 sheets.

- Folder 18. St. Joseph Plantation, St. James Parish. 1996. Vellum copies. 51 sheets.
- Folder 19. Evergreen Plantation, St. John the Baptist Parish, LA. 1993. Vellum copies. 39 sheets.
- Folder 20. Woodland Plantation, Plaquemines Parish, LA. 1995. Blueline copies. 36 sheets.
- Folder 21. Egania, 400, Doullut Steamboat House, New Orleans, LA. 1990; 1991. Ink on mylar. 12 sheets.
Pauger, 1515, New Orleans, LA. 1998. Vellum copies. 18 sheets.
Royal, 1132, Gallier House, Proposed Education Wing, New Orleans, LA. 1989. 7 sheets.
St. Ann, 826, Spring Fiesta House, New Orleans, LA. 1986. Ink on mylar. 11 sheets.
- Folder 22. Pontalba Building, 1850 House, New Orleans, LA. 1996. Vellum copies. 48 sheets.
- Folder 23. Dumaine, 628-632, Madame John's Legacy, New Orleans, LA. 1994; 1995. Xerox copies. 30 sheets.
St. Louis, 537, Chesneau Mansion (Lafitte Bank), New Orleans, LA. 1987. Sepia copies. 11 sheets.
- Folder 24. Governor Nicholls, 1418, Villa Meilleur, New Orleans, LA. 1988. Xerox copies. 42 sheets.
- Folder 25. Destrehan Plantation, Culinary Institute Proposal, St. Charles Parish, LA. 1989. Ink on mylar. 10 sheets.
- Folder 26. St. Charles Parish, LA. Destrehan Plantation Manor, 1790. 1984; 1986; 1989. Historic American Buildings Survey, Tulane University School of Architecture, Eugene D. Cizek, director. James Skiba; J.S. Miller, delineators. 46 sheets.
- Folder 27. Jackson Avenue, New Orleans, LA. McDonogh #36 School. 2001. Historic American Buildings Survey, Tulane University School of Architecture, Eugene D. Cizek, director. Michell Bertrand, Susan Charlot, et al, delineators. 17 sheets.
Esplanade Avenue, 1037, New Orleans, LA. Athay-Krajcirik House. Undated. Historic American Buildings Survey, Tulane University School of Architecture, Eugene D. Cizek, director. Evan Siegel, Melissa Borrero, delineators. 8 sheets.
- Folder 28. Iberia Parish, LA. Enterprise Plantation. 1993. Historic American Buildings Survey, Tulane University School of Architecture, Eugene D. Cizek, director. Erin Christman, Stacie Monroe, delineators. 12 sheets.
- Folder 29. St. Louis Street, 1025, New Orleans, LA. Sindos-Latorre-Boucvalt House. 1993. Historic American Buildings Survey, Tulane University School of Architecture, Eugene D. Cizek, director. Susan A. Casente, David M. Connick, delineators. 13 sheets.
St. Bernard Parish, LA. Caserta House; Esteves House; and Estopinal House, for the Los Islenos Museum. 2002. Historic American

Buildings Survey, Tulane University School of Architecture,
Eugene D. Cizek, director. Bhavesh Mittal, George Clements, et al,
delineators. 22 sheets.

Folder 30. St. Bernard Parish, LA. St. Bernard Cemetery. 2002. Historic American
Buildings Survey, Tulane University School of Architecture,
Eugene D. Cizek, director. 38 sheets.

Half-size copies of original plans at the Library of Congress.

Vol. 1.

1. Square #62; Bourbon, Toulouse, Royal and St. Louis Streets.
2. Casa Flinard.
3. Service Wing of Peychaud House.
4. LA State Museum Buildings.
5. The Presbytere.
6. The Cabildo.
7. The Arsenal.
8. Bosque House.
9. Troxler Cottage.
10. First Sky Skyscraper.
11. La Rionda Cottage.

Vol. 2.

1. Cottage 1436 Pauger St.
2. Beauregard House.
3. Cottage 941 Bourbon St.
4. Gally House.
5. Spanish Customs House.
6. LA State Bank.
7. Girod House.
8. Lepretre Mansion.
9. Central Congregational Church.
10. Spanish Fort.
11. The Archbishopric.

Vol. 3.

1. Lastrapes House.
2. Belle Grove.
3. Clinton Courthouse.
4. Lawyers' Row.
5. Brame House.
6. African House.
7. Lemee House.

8. Burnside/Houmas Plantation.
9. Chretien Point.
10. Homeplace Plantation.
11. Parlange Plantation.
12. Fannie Riche Plantation.
13. Woodlawn.
14. Rene Beauregard House.
15. La Garconnierre.
16. Ormand Plantation.
17. Angelina Plantation.
18. Greenwood Plantation.

Vol. 4.

1. First Skyscraper.
2. Parlanger Plantation.
3. Woodlawn.
4. Clinton Court House.
5. Lawyers' Row.
6. Casa Flinard.
7. Service Wing of Peychaud House.
8. Fannie Riche Plantation.

Paper Bound Blueprints.

1. Ormond Plantation.
2. First Skyscraper.
3. Clinton Court House.
4. Rene Beauregard House.
5. Fannie Riche Plantation.
6. Parlange Plantation.
7. LA State Museum Building.
8. Girod House.
9. Louisiana State Bank.
10. The Arsenal.
11. The Presbytere.
12. The Cabildo.
13. La Garconniere.
14. Casa Flinard.
15. Service Wing of Peychaud House.
16. Spanish Custom House.
17. Cottage Central Congregational Church.
18. Gally House.
19. Cottage.
20. Franks Island Lighthouse.
21. Lawyers' Row.

22. Spanish Custom House.
23. The Archbishopric.
24. Beauregard House
25. Woodlawn.
26. Spanish Fort.
27. Angelina Plantation.