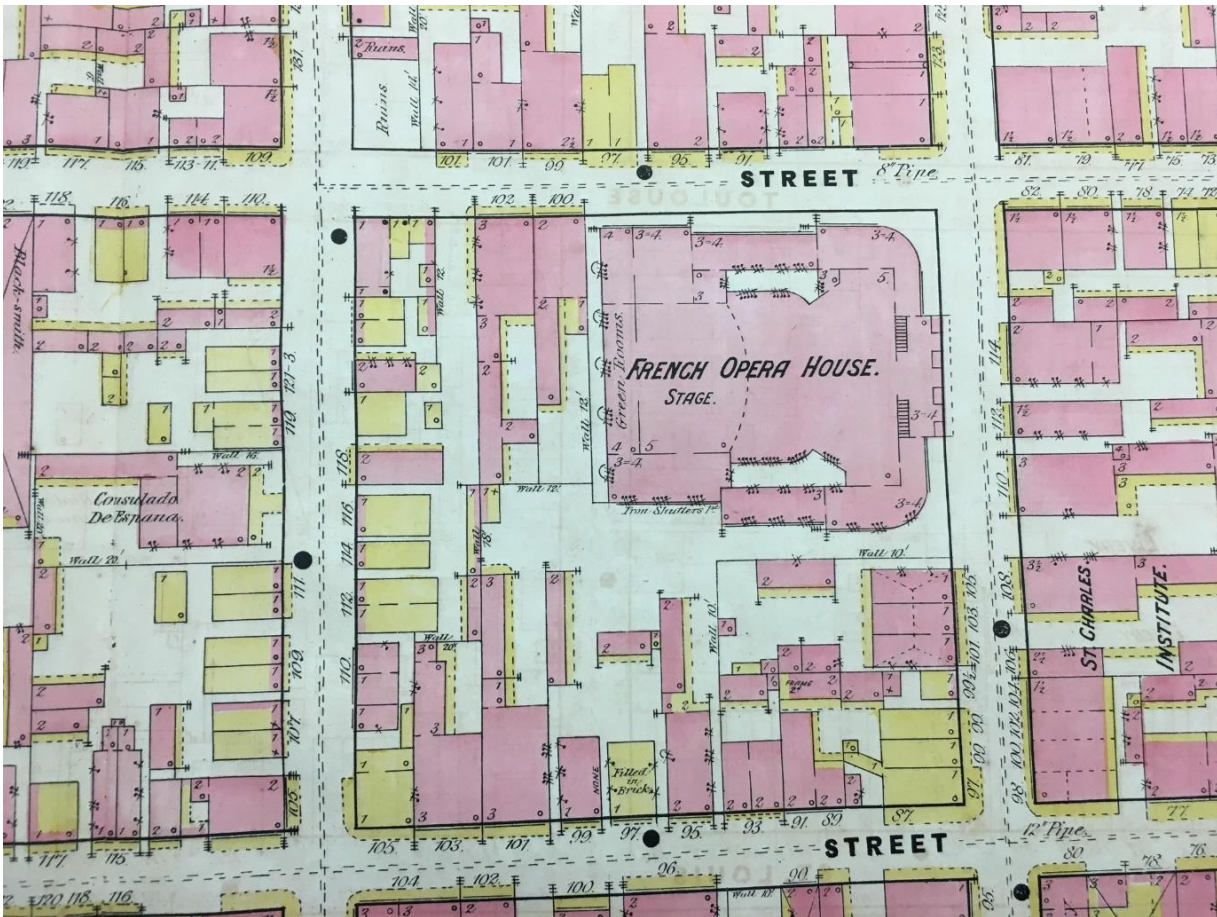


# Sanborn Fire Insurance Maps

## SOUTHEASTERN ARCHITECTURAL ARCHIVE COLLECTION 125



Sanborn Map, New Orleans, 1876, Volume 2. Detail showing French Opera House, Bourbon and Toulouse Streets.

## SCOPE and CONTENTS

Maps  
1876 – 1960s  
87 volumes

Fire insurance maps made by the Sanborn Map Company. 46 volumes of the maps are for New Orleans and cover 1876 – 1940s (updated through the 1960s). The two volumes for 1876 are the earliest Sanborns for New Orleans, and the only known copies. There are also 24 volumes for other cities in Louisiana and 14 volumes for cities in Mississippi. Maps show individual blocks in cities, and include buildings on each property. Buildings are color coded to indicate materials of which they are constructed. Symbols and notes provide additional information. Maps are drawn to a large

scale showing buildings in considerable detail. Many volumes were updated using pasted corrections. Date corrections were made to volumes is indicated at the beginning of each volume, though individual corrections are not dated on each sheet. B/W digital versions are available online through Tulane campus computers <http://sanborn.umi.com/>. In 2017, the Library of Congress released color digital versions of pre-1900 Sanborns <https://www.loc.gov/collections/sanborn-maps/about-this-collection/>, and also in 2017, SEAA's 1876 Sanborns were digitized and are available on the [Tulane University Digital Library](#). Researchers are encouraged to utilize the online maps before consulting the physical copies in SEAA.

## **PROVENANCE**

Maps have been in the collections of Howard-Tilton Library, Tulane University since ca. late 1960s, having been donated by unidentified insurance agencies.

## **ACCESS**

This collection is housed in Tulane University Libraries' Southeastern Architectural Archive (SEAA) and requires an advance appointment for use. For further information, call (504) 865-5699, or email [seaa@tulane.edu](mailto:seaa@tulane.edu). The unauthorized use, including, but not limited to, publication of the materials without the prior written permission of the Southeastern Architectural Archive is strictly prohibited. All inquiries regarding permission to publish should be submitted in writing. Please see our [Permission to Publish Guidelines](#).

## **PREFERRED CITATION**

Sanborn Fire Insurance Maps, Southeastern Architectural Archive, Special Collections Division, Tulane University Libraries.

## **INVENTORY**

### **Sanborn Fire Insurance Atlases, Set 1.**

#### **New Orleans.**

1876, V. 1 and 2.

1885, V. 1.

1895, V. 2 (corrected-1903).

1896, V. 1, 3, and 4 (corrected-1903).

1908, V. 1 (corrected-1934), V.2 (corrected-1934; 1939), V.3 (corrected. 1934; 1939).

1909, V. 4 (corrected-1933), V.5 (corrected-1933; 1964), V.6 (corrected-1934; 1964), V.7 (corrected-1934; 1935).

1920, V. 4 (corrected-1964).

1929, V. 8 (corrected-1934; 1964), V. 10 (corrected-1962), V. 13 (corrected-1964).

1937, V. 1 (corrected-1964), V. 7 (corrected-1964), V. 9 (corrected-1964).

1940, V. 1A (corrected-1963), V.2 (corrected-1964), V.6A (corrected-1964).

**B/W Copies of 1978/1979 Set for New Orleans (and some Westbank).**

V. 1 – 10; 16 – 17.

**Louisiana-Outside New Orleans.**

**Book 1.**

Abbeville, 1929 (corrected-1959).

Amite, 1908.

Arcadia, 1924.

Bastrop, 1927 (corrected-1959)

Berwick, 1906.

**Book 2.**

Baton Rouge, V. 1. 1923 (corrected-1963).

**Book 3.**

Baton Rouge, V. 2 (corrected-1952).

**Book 4.**

Baton Rouge, V. 3 (corrected-1953).

**Book 5.**

Bogalusa, 1930 (corrected-1953).

Bonita, 1922.

Bunkie, 1931 (corrected-1961).

**Book 6.**

Alexandria, 1953 (corrected-1961).

**Book 7.**

Cedar Grove, 1924.

Clinton, 1908.

Columbia, 1919.

Coushatta, 1928 (corrected-1951).

Covington, 1927 (corrected-1954).

Crowley, 1931 (corrected-1960).

**Book 8.**

De Ridder, 1928 (corrected-1960).

Donaldsonville, 1923.

Eunice, 1946 (corrected-1960).

Ferriday, 1926.

Franklin, 1928 (corrected-1959).

**Book 9.**

Gilbert, 1922.

Glenmora, 1930 (corrected-1946).

Gueydan, 1927 (corrected-1952).

Hammond, 1930 (corrected-1955).

Haynesville, 1927 (corrected-1944).

Homer, 1928 (corrected-1959).

**Book 10.**

Homa, 1931 (corrected-1959).

Jeanerette, 1912.

Jennings, 1926 (corrected-1960).

Jonesboro, 1924 (corrected-1961).

Kaplan, 1929 (corrected-1961).

Kenner, 1939.

**Book 11.**

Lafayette, 1940 (corrected-1962).

**Book 12.**

Leesville, 1909.

Lutcher, 1909.

Mandeville, 1926.

Mansfield, 1928 (corrected-1959).

Many, 1929 (corrected-1951).

Marksville, 1931 (corrected-1952).

Minden, 1923.

Morgan City, 1927 (corrected-1959).

**Book 13.**

Lake Charles, 1925 (corrected-1961).

Lake Providence, 1928 (corrected-1944).

**Book 14.**

Napoleonville, 1927 (corrected-1954).

Natchitoches, 1930 (corrected-1959).

Newellton, 1930.

Oakdale, 1925.

Oak Grove, 1930.

Opelousas, 1927 (corrected-1961).

**Book 15.**

Patterson, 1912.

Plaquemine, 1930 (corrected-1962).

Ponchatoula, 1930 (corrected-1952).

**Book 16.**

Rayne, 1933 (corrected-1960).

Ruston, 1933 (corrected-1961).

Slidell, 1930 (corrected-1952).

Sulphur, 1946.

**Book 17.**

Shreveport, 1935, V. 1 (corrected-1963).

**Book 18.**

Shreveport, 1935, V. 2 (corrected-1963).

**Book 19.**

Shreveport, 1935, V. 3 (corrected-1963).

**Book 20.**

1924, Supplement (corrected-1934).

**Book 21.**

Tallulah, 1938 (corrected-1952).

Thibodaux, 1932 (corrected-1949).

Ville Platte, 1938 (corrected-1949).

Vivian, 1938 (corrected-1950).

Washington, 1927.

Welsh, 1926 (corrected-1941).

White Castle, 1928 (corrected-1952).

Winnfield, 1924 (corrected-1952).

Winnesboro, 1930 (corrected-1949).

**Book 22.**

Bunkie, 1931 (corrected-1939).

Church Point, 1935.

Covington, 1927 (corrected-1948).

Eunice, 1946.

Franklin, 1928.

Hammond, 1930 (corrected-1937).

Houma, 1931 (corrected-1942).

Jonesboro, 1924 (corrected-1944).

Denham Springs, NO YEAR.

De Ridder, 1928 (corrected-1949).

**Book 23.**

Amite City, 1898.

Bayou Sara and St. Francisville, 1898.

Bastrop, 1899.

Belle Isle, NO YEAR.

Cheneyville, 1899.

Crowley, 1902 (corrected-1907).

Donaldsonville, 1900.

Eunica, 1901 (corrected-1904).

Hammond, 1896.

Homer, 1898.

Houma, 1898.

Jennings, 1900.

Siess and Co. (Saw Mill Plant), 1900.

Leesville, 1901.

Le Compte, 1903.

Mansfield, 1899.

Many, 1902.

Mer Rouge, 1900.

Monroe, 1898.

Minden, 1898.

Newellton, NO YEAR.

Natchitoches, 1899.

Oak Ridge, 1898.

Patterson, 1899.

Pollock, 1901.

St. Martinsville, 1898.

Slaughter, 1898.

Shreveport, 1899.

Vivian, 1901.

Vidalia, 1899.

Washington, 1898.

Wilson, 1898.  
White Castle, NO YEAR

**Book 24.**

Morgan City, 1927 (corrected-1940)  
Opelousas, 1927 (corrected-1940).  
Tallulah, 1938.

**Book 25. Mississippi.**

Amory, 1929 (corrected-1960).  
Bay St. Louis, 1930 (corrected-1960).  
Brookhaven, 1925 (corrected-1958).

**Book 25A. Mississippi.**

Biloxi, 1925; 1952.

**Book 26. Mississippi.**

Cleveland, 1933 (corrected-1960).  
Columbus, 1926 (corrected-1960).  
Gloster, 1925 (corrected-1950).  
Greenville, 1931 (corrected-1961).

**Book 27. Mississippi.**

Greenwood, 1926 (corrected-1962).

**Book 28. Mississippi.**

Gulfport, 1929 (corrected-1961).

**Book 29. Mississippi.**

Hattiesburg, 1931 (corrected-1961).  
Leland, 1925 (corrected-1952).

**Book 30. Mississippi.**

Canton, 1925 (corrected-1960).  
Centreville, 1925.  
Charleston, 1925.  
Clarksdale, 1929.

**Book 31. Mississippi.**

Jackson, 1925, V. 1 (corrected-1963).

**Book 32. Mississippi.**

Jackson, 1925, V. 2 (corrected-1963).

**Book 33. Mississippi.**

Laurel, 1926 (corrected-1961).

**Book 34. Mississippi.**

Meridian, 1912 (corrected-1961).

**Book 35. Mississippi.**

McComb, 1925 (corrected-1959).

Moss Point, 1925 (corrected-1952).

Natchez, 1925 (corrected-1959).

Nettleton, 1938.

\*Separate loose volume for Natchez, 1925 (corrected-1930), housed with Book 35.

**Book 36. Mississippi.**

New Albany, 1925 (corrected-1954).

Okolona, 1925 (corrected-1946).

Pascagoula, 1924 (corrected-1960).

Pass Christian, 1930 (corrected-1963).

\*Separate loose volume for Oxford, 1895, housed with Book 36.

**Book 37. Mississippi.**

Ruleville, 1925 (corrected-1955).

Senatobia, 1925 (corrected-1940).

Shelby, 1925 (corrected-1948).

Vicksburg, 1886 (corrected-1889).

Vicksburg, 1925 (corrected-1961).

**Book 38. Mississippi.**

Tunica, 1924 (corrected-1946).

Tupelo, 1929 (corrected-1959).

Walnut, 1937.

Water Valley, 1932 (corrected-1940).

West Point, 1925 (corrected-1959).

Winona, 1932 (corrected-1949).

Yazoo City, 1889; 1927 (corrected-1960).

**Sanborn Fire Insurance Atlases, Set 2.**

Baton Rouge Vol. 1, 1923 (corrected-1952).

Baton Rouge Vol. 2, 1923 (corrected-1963).

Baton Rouge Vol. 3, 1923 (corrected-1963).

Covington, 1909.

Crowley, 1902.



Crowley, 1909; Donaldsonville, 1906; Lutcher, 1909; Slidell, 1911; Vidalia, 1907.

Gueydan, 1904.

Hammond, 1930 (corrected-1950).

Houma, 1931 (corrected-1952).

Lafayette, 1921.

Lake Charles, 1903.

Morgan City, 1906.

Monroe, 1903.

Monroe V. 1, 1932 (corrected-1961).

New Iberia, 1904.

New Orleans V. 1, 1937 (corrected-1963).

New Orleans V. 1A, 1940 (corrected-1964).

New Orleans V. 2, 1940 (corrected-1962).

New Orleans V. 3, 1940 (corrected-1964).

New Orleans V. 4, 1909 (corrected-1963).

New Orleans V. 5, 1909 (corrected-1963).

New Orleans V. 6, 1909 (corrected-1963).

New Orleans V. 6A, 1940 (corrected-1961).

New Orleans V. 7, 1937 (corrected-1961).

New Orleans V. 8, 1929 (corrected-1962).

New Orleans V. 9, 1937 (corrected-1962).

New Orleans V. 10, 1929 (corrected-1964).

New Orleans V. 13, 1929 (corrected-1962).