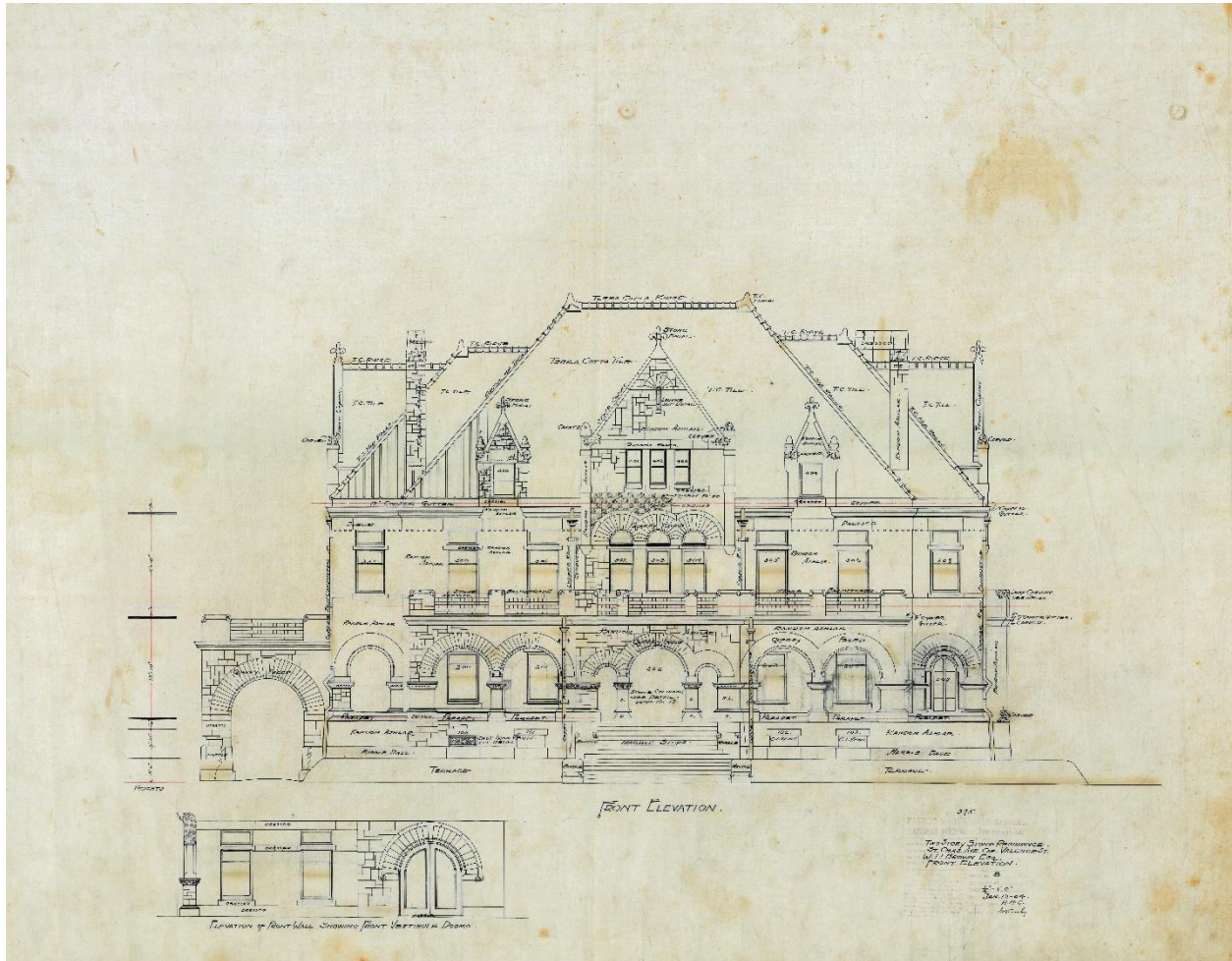


Favrot and Livaudais Drawings

SOUTHEASTERN ARCHITECTURAL ARCHIVE COLLECTION 120



4717 St. Charles Avenue, New Orleans, LA. Residence for W.P. Brown. 1904. Favrot and Livaudais, architects.
Ink on linen.

SCOPE and CONTENTS

Project drawings
Ca. 1908 – 1975
One folder

Project drawings from the New Orleans architectural office, Favrot and Livaudais (Charles Favrot, 1866-1939); Louis A. Livaudais, 1870-1932). Included is a set of copy prints for the New Orleans Municipal Auditorium, an original rendering for additions to the Hutchinson Memorial of Tulane

University Medical School, a front elevation drawing for 4717 St. Charles Avenue, and drawings for alterations, ca. 1908, for 2833 St. Charles Avenue, a mid-19th century residence in New Orleans. Charles Favrot and Louis Livaudais worked in the office of New Orleans architect James Freret (1838-1897).

PROVENANCE

Copy prints of the New Orleans Municipal Auditorium were given by Richard Remy Dixon to Tulane in 1974. Other records were transferred from other Tulane Library departments.

ACCESS

This collection is housed in Tulane University Libraries' Southeastern Architectural Archive (SEAA) and requires an advance appointment for use. For further information, call (504) 865-5699, or email seaa@tulane.edu. The unauthorized use, including, but not limited to, publication of the materials without the prior written permission of the Southeastern Architectural Archive is strictly prohibited. All inquiries regarding permission to publish should be submitted in writing. Please see our [Permission to Publish Guidelines](#).

PREFERRED CITATION

Favrot and Livaudais Drawings, Southeastern Architectural Archive, Special Collections Division, Tulane University Libraries.